



**scenesafe**<sup>™</sup>

Crime Scene Equipment



# Contents

Why SceneSafe? .....	2
Scene Management -	
Overview .....	4
Tents & Screening .....	9
Personal Protective Equipment .....	10
Fingerprint Development -	
Overview .....	15
Fingerprint Powders .....	16
Forensic DNA Grade Solutions .....	22
Fingerprint Brushes .....	23
Lift & Recovery .....	25
Fingermark Recovery .....	29
Footwear & Palm Print Recovery .....	31
Photography Scales .....	33
Evidence Collection -	
Overview .....	36
Tamper Evident Packaging .....	37
Evidence Boxes .....	40
Evidence Packaging Kits .....	44
Body Bags .....	45
Arson Investigation.....	46
Forensic Laboratory Processing -	
Overview .....	47
Forensic Marking .....	48
Lab Essentials .....	49
Cleaning Range .....	52
Build Your Own Crime Scene Kit .....	54
Index .....	64

**Please Note! The majority of items in this brochure can be supplied as a Forensic DNA Grade solution which complies with ISO18385, please contact the sales team for more information.**





**MADE IN  
BRITAIN**

## Why SceneSafe?

Formerly part of the UK Home Office Forensic Science Service, and now part of the WA Group; SceneSafe has developed a product range of crime scene equipment to support forensics and policing in both general day to day functions as well as more complex areas of scientific development.

This brochure walks through the investigative stages; from Scene Management to Laboratory Processing as well as providing details on our new modular CSI kit concept.

SceneSafe have identified improvements to existing solutions, enhancing subtle changes which our customers have found deliver a more productive working environment and a better level of service.

SceneSafe's core value is to establish ourselves as the principal supplier of crime scene equipment, providing a service led commercial response to those challenges faced by crime scene specialists.

Some numbers to consider:

£2M : Stock available for just in time delivery

5,000 : Square metres of storage and warehousing facility

376 : Products dedicated to CSI in this brochure

68 : Pages packed full of quality solutions

60+ : Kits within this catalogue designed with the practitioners in mind

65 : SceneSafe Team Members based at our Headquarters in Essex, UK

21 : Years servicing the forensic sector

5 : Dedicated procurement specialists

3 : ISO 14644 Class 4 & 5 accredited clean rooms

1 : Chemical processing & Research & Development Laboratory

18385 : Ready for the new ISO standard in preventative measures to combat human DNA contamination in forensic science

**ZERO TOLERANCE ON CONTAMINATION**



# Scene Management

In forensic science, Locard's exchange principle holds that the perpetrator of a crime will bring something into the crime scene and leave with something from it, and that both can be used as forensic evidence.

It is even more critical today to ensure that the evidence is gathered in the correct manner maintaining its integrity for court room use. Crime scenes must be secured and protected to ensure that all evidence is preserved prior to an examination. Correct management incorporates good practice with good equipment. SceneSafe can focus on both of these elements.

DNA amplification is a powerful technique that has had an immense impact on forensic science. With the development of forensic analytical techniques such as DNA 17 in the UK, SceneSafe are now offering many of our products as being available to a certified Forensic DNA grade. This means that the product undergoes a fully documented and quality controlled DNA denaturing process which is batch tested and analysed by an ISO 17025 accredited laboratory before being certificated as fit for forensic use.

Speak to a member of our team to discuss the new options available.





# Scene Management: Scene Preservation

It is vitally important to manage who and what goes in and out of a scene of crime to ensure that a high level of integrity is maintained throughout the examination phase. We have identified some key products to enhance the control process and offer scope and review management services.



## Barrier Tape

- Strong durable material
- Essential control measure
- Various designs available

Our SceneSafe barrier tapes are 250m in length and 75mm wide. Tapes are made of a high quality polythene and are durable and versatile for use at crime scenes.

**Code K779** - Police Line Do Not Cross / **Pack Size 1**

**Code K780** - Crime Scene Do Not Enter / **Pack Size 1**

**Code K777** - Police / **Pack Size 1**

**Code K1167** - Caution Biohazard / **Pack Size 1**

**Code K2780** - Police Inner Cordon / **Pack Size 1**

**Code K1201** - Red/White / **Pack Size 1**

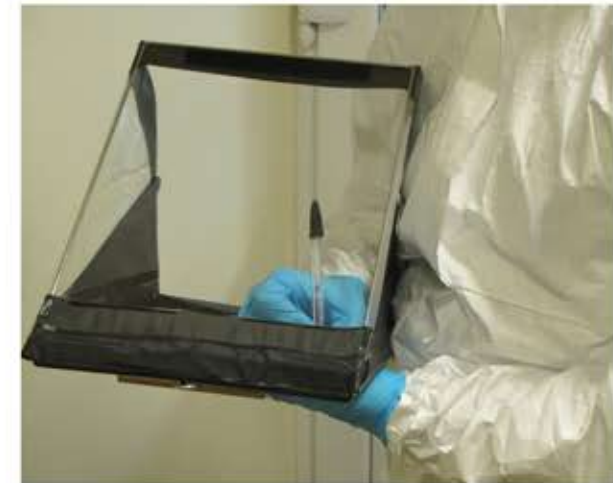


## SceneSafe Custom Barrier Tape

- Produced in any language
- Low minimum order quantity
- Print, logo, text options

We have the ability to design and manufacture barrier tapes in a variety of languages, colours and sizes. Contact a member of our sales team to discuss your exact requirements.

MOQ 144 Rolls per print



## Scene Record Kit

- Record log
- All weather clipboard
- Integrity of scene

It is essential to monitor and audit who enters and leaves the scene once an investigation has been initiated. This kit includes all that is needed to manage a scene log. Includes stationary, tamper evident packaging and a weather writer A4 folder.

Custom options can be designed and manufactured by our production team.

Contact our team to explore a bespoke kit option.

**Code K3815** / **Pack Size 1**

# Scene Management: Scene Preservation



## First on Scene Kit

- Preserve life
- Create scene barrier
- Gather crucial early evidence

Used by Police Officers on arrival at a scene and stored in kit form within a patrol vehicle. Includes all essential items for preservation of life, scene management, PPE and vital evidence collection.

Contact us for a more detailed product discussion with a view to exploring a custom built option.

**Code K3830 / Pack Size 1**



## Tack Mats

- High tack debris collection
- Minimise cross contamination
- Easy to use and disposable after use

Control what is being taken into the scene with floor tack mats. Designed to remove debris or contamination entering the scene through an adhesive matt panel placed at key entry points, excellent for both scene and labs.

**Code K1365 / Pack Size 30 Sheets**



## Elimination Kit

- Volunteer DNA profile
- Eliminate legitimate profiles from your investigation
- Volunteer self-usage

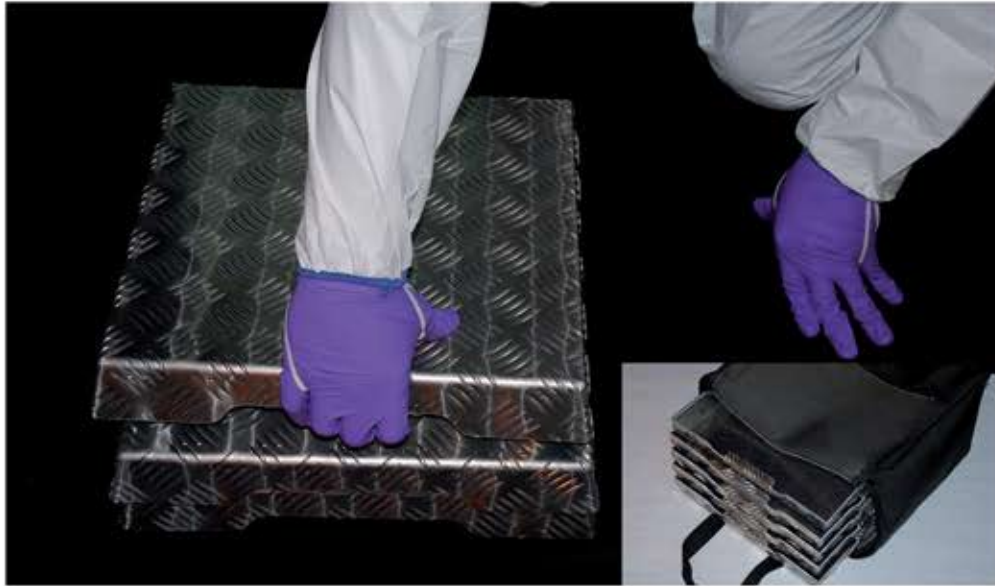
When conducting a scene examination it may be important to eliminate known DNA or fingerprints from that of potential suspects. This kit contains both volunteer DNA kits and also elimination fingerprint recording capability. Each kit can accommodate 10 person elimination and can reduce time taken by offering a self-usage version of the kit which can be completed and returned by the individual.

Custom kit options are available including bespoke bags, forms and contents.

**Code K3820/ Pack Size 25**



# Scene Management: Scene Preservation



## Aluminium Stepping Plates

- Anti-slip 3mm Aluminium
- Available in 3 sizes
- Can be DNA cleaned

The traditional aluminium stepping plates are made from a lightweight anti-slip aluminium sheet. These are easy to clean using our HLD4L disinfectant (see page 52) allowing for the plates to be used from scene to scene without the risk of contamination.

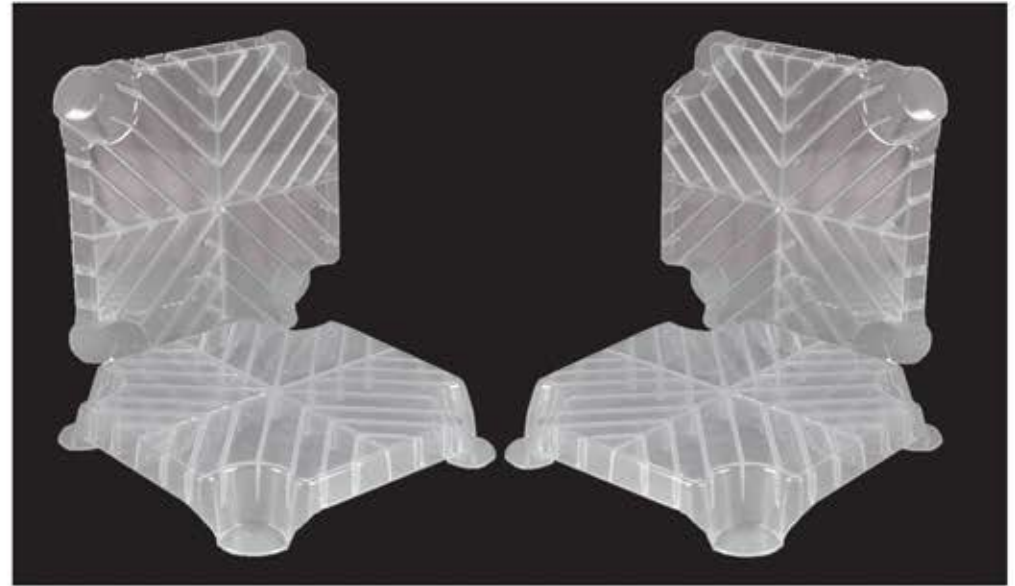
Multi-pack - 5 - 15" x 15" Stepping Plates contained in padded polyester bag  
This kit contains five 15" x 15" stepping plates in a sturdy padded carry bag. Ideal for transporting plates to the crime scene. We are happy to provide combinations of other sizes or quantities packed to suit your specific needs – please contact us if you require a bespoke combination.

**Code K782 - 12" x 6" / Pack Size 1**

**Code K783 - 15" x 15" / Pack Size 1**

**Code K784 - 18" x 18" / Pack Size 1**

**Code K785 - Multi-Pack / Pack Size 1**



## Plastic Tread Plate / Platform

- Rugged Plastic
- Lightweight & Portable
- Can be DNA cleaned

Our SceneSafe plastic stepping plates provide the opportunity to create a solid platform to work on. The rugged plastic is robust and lightweight. These are easy to clean using our HLD4L disinfectant (see page 52) allowing for the plates to be used from scene to scene without the risk of contamination.

K799-5 - This comes contained in padded polyester bag

**Code K799 / Pack Size 1**

**Code K799-5 / Pack Size 5**

Disposable plastic grippers. Designed to fit neatly on the corners of the stepping plate feet to minimise slippage on smooth surfaces and damage to laminate flooring. Remove at the end of the investigation to prevent cross contamination or collect as evidence if required.

**Code K797 - Grippers / Pack Size 200**

# Scene Management: Evidence Marking

Evidence marking is an early task to ensure each piece to be examined is identified prior to submission. SceneSafe have developed some advanced features to enhance the user during scene examination.



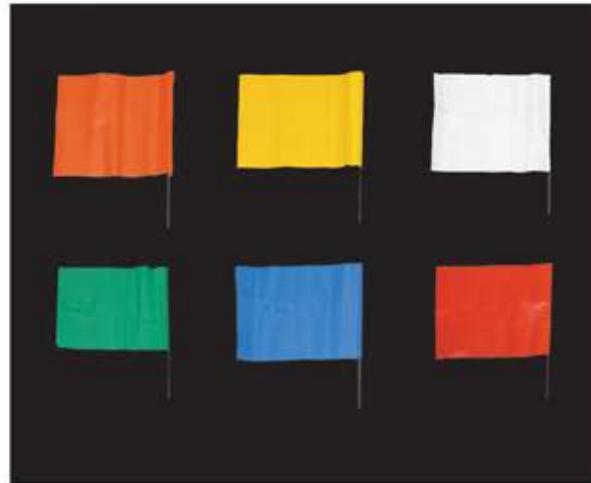
## Preservation Covers

- Prevents weather contamination
- Light weight, portable & robust
- Easy to use, quick to erect

The evidence preservation cover was designed to protect evidence from external forces and ensure evidence is protected over long periods of time. Easy to use and quick to erect. Custom print available.

Scenesafe can also provide fixing pegs to help secure these preservation covers in adverse weather conditions.

**Code K999 / Pack Size 1**



## Evidence Marking Flags

- Identify evidence across wide area
- Map & mark evidence sequentially
- Choice of colours

Mark evidence in a numerical sequence over a range of distance to identify and map a scene. Available in a choice of colours.

**Code K3821-OR - Orange / Pack Size 100**

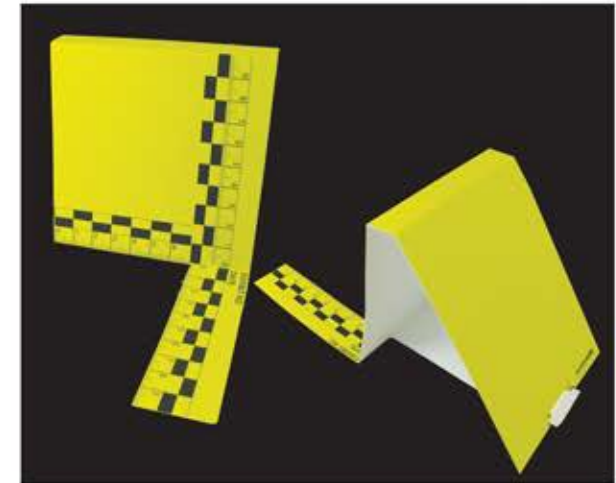
**Code K3821-YL - Yellow / Pack Size 100**

**Code K3821-WH - White / Pack Size 100**

**Code K3821-GR - Green / Pack Size 100**

**Code K3821-BL - Blue / Pack Size 100**

**Code K3821-RD - Red / Pack Size 100**



## Disposable Evidence Markers

- Forensic DNA grade
- Yellow laminated card
- Built-In Photographic Scale

Used at crime scenes where a forensic DNA grade marker is required as a use once item. Our disposable markers undergo A DNA denaturing process which denatures background DNA so it cannot cross contaminate a scene. Numbers supplied 1-15 in yellow with black font and 5 blank.

**Code K3822 / Pack Size 15**



## Scene Management: Evidence Marking



**Markers with scale 1-15**

- Built-in scale 6cm x 14cm
- Angled for photographic capture
- 5 x Blank markers included

Our new crime scene marker incorporates a 5cm x 15cm scale. This allows quick processing of evidence when photographing and removes the need for a separate scale. We have also included 5 blank markers which can be used alongside the numbers or replace loss of numbered markers.

**Code K1389 / Pack Size 1 Set**



**Tent ID Markers**

- Classic crime scene marker 1-15, 16-50, 51-99
- Optional case available
- Available as forensic DNA grade product

Classic tent ID markers in yellow with black text. Available in both DNA denatured or standard version. Made of a robust plastic material and can be cleaned after use with our SceneSafe chemical range (see page 52 for more information on DNA removal.)

**Code K1217-115 / Pack Size 1 Set**

**Code K1217-1650 / Pack Size 1 Set**

**Code K1217-5199 / Pack Size 1 Set**



**4 sided markers 1-15**

- Robust toughened plastic marker
- Number visible on each 4 sides
- Available to be used with SceneSafe marker flags

Our SceneSafe tough markers are useful when evidence needs to be marked securely with a more robust option. they can be used in conjunction with the marker flags to provide an elevated point of reference.

**Code K3823 / Pack Size 1 Set**

# Scene Management: Tents/Screening

Restricting the scene from public view is a priority in today's media centred culture. Our tent and shelters offer variations of material, size, colour and print options so please speak to a member of our sales team to discuss the options available.



## Speed Tent

- Rapid erect within 20 seconds
- Robust, portable & easy to use
- Custom options available

Rapid erect speed tents are made from quality PVC material and manufactured in a range of sizes outlined below. Additional items for securing and transporting tents are also available, speak to a team member to find out more.

Custom artwork is available on request and we strongly recommend this bespoke option.

**Code K3959** - 6 x 3 x 3m PVC

**Code K2681** - 2 x 1.5 x 0.65m PVC

**Code K2680** - 3 x 3 x 2m PVC

**Code K2683** - 1.8 x 1.8 x 2m PVC Black Out Tent



## Speed Screen

- Rapid deployable system
- Secures to fixings for added stability
- Custom options available

Each set includes 2 aluminium lightweight poles which can be interlinked as shown in the image above to create a barrier of desired length. Used in emergency situations where public view is to be restricted. As with most of our scene management range custom print options are available.

Additional aluminium lightweight poles can be purchased to extend the screen to fit the scene.

**Code K2692**



## Body Tent

- Rapid erect & portable
- Re-usable after post scene decontamination
- Secured to ground

All of our tent range can be decontaminated for repeat usage eliminating transfer from scene to scene. See page 52 for our DNA cleaning range.

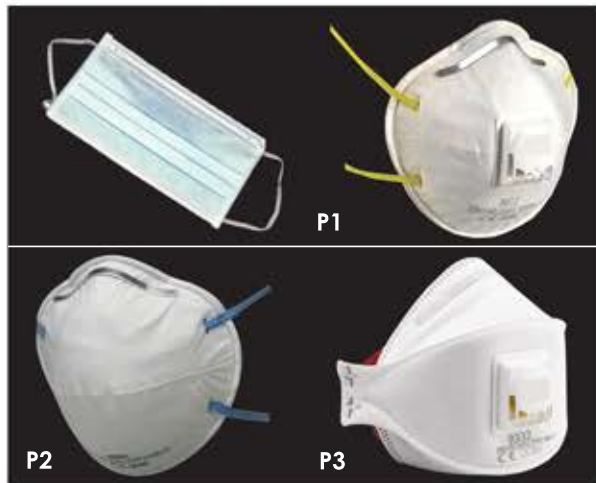
**Code K2684** - Rapid Erect / **Pack Size 1**

**Code K2685** - A-Frame / **Pack Size 1**



# Scene Management: Personal Protective Equipment (PPE)

With the development of forensic analytical techniques such as DNA 17 in the UK, the importance of protective clothing is ever more critical to ensure both protection to the end user and also to reduce contamination risk at the scene. Our range of PPE addresses both comfort and performance allowing both user and scene requirements to be factored into the equation.



## Respirators

- FFP1, 2 & 3
- Conforms to EN149:2001
- Ergonomic design for comfort

All our crime scene respirators are designed to protect the user from contaminating the scene and to aid respiratory protection to a suitable level sufficient to the scene required. Our respirators are available in Surgeon, P1, P2 & P3 protection levels. Speak to one of our sales team to discuss your PPE requirements.

**Code K1164 - Surgeons Mask / Pack Size 50**

**Code K3816 - P1 / Pack Size 10**

**Code K2880 - P2 / Pack Size 20**

**Code K2888 - P3 / Pack Size 10**



## Eye Protection

- CE Approved
- Quality performance
- Ergonomic design for comfort

Our crime scene eyewear allows a crime scene examiner to protect both the scene and oneself. We have developed our range to offer four options to suit the users requirement.

**Code K1198 - Goggles / Pack Size 1**

**Code K3008 - Glasses / Pack Size 1**

**Code K3817 - Full Face Mask / Pack Size 1**

**Code K3824 - Visor / Pack Size 1**



## Ear/Head Protection

- Mob Cap – reduce possible hair contamination
- Ear Defenders – protect hearing in noisy conditions
- Hard Cap – protect head whilst working
- Helmet – protect head in applicable environment

Ear & Head protection is a requirement for user health & safety and an area which must be adhered to in today's working environment. We offer a range of options to suit a variety of working conditions and we would advise each is available in the scene examiners PPE kit.

**Code K774 - Mob Caps / Pack Size 1000**

**Code K3819 - Ear Defenders / Pack Size 1**

**Code K3818 - Cap / Pack Size 1**

**Code K1199 - Helmet / Pack Size 1**

SceneSafe offer a wide variety of user training programmes including PPE & respirator fit. Our qualified trainers provide a full PPE course to correctly fit the individual to ensure safety and protection is correctly achieved.

# Scene Management: Personal Protective Equipment (PPE)

With the development of ISO 18385, a standard to minimise the risk of human DNA within forensic consumables, we have the ability to offer all PPE and many other single use consumables used to collect and analyse DNA material at a crime scene to a Forensic DNA Grade. Speak to a member of our team to discuss the options available and the new ISO standard in detail.



## SceneSuits

- Type 5/6 Coverall
- Ergonomically designed
- Knit cuffs & elasticated wrists for added comfort

Our SceneSuit has added user comfort, used by police scene of crime officers on a daily basis providing high level protection to the scene and the user.

**Code K3831-S - Small / Pack Size 1**

**Code K3831-M - Med / Pack Size 1**

**Code K3831-L - Large / Pack Size 1**

**Code K3831-XL - X-Large / Pack Size 1**



## Training SceneSuits

- Low cost
- Comfortable
- Suitable for training purposes only

SceneSafe provide full CSI training services including all necessary equipment, consumables and reading material. We understand that most training scenarios do not require high level protection or comfort so we have extended our suit range to include a low cost training option. It has a limited protection but will ensure contamination is not compromised in training scenarios.

**Code K3853-S - Small / Pack Size 1**

**Code K3853-M - Med / Pack Size 1**

**Code K3853-L - Large / Pack Size 1**

**Code K3853-XL - X-Large / Pack Size 1**



## Chemical SceneSuits

- EN14605 Type 3 Suit
- 3 options available
- Fully tested & accredited

Chemical protection is a high priority and we offer only type 3 class passed suits. This means that each suit passes each of the 5 standard tests at the highest class available. We want to give our users confidence that they have the highest level of protection for the task at hand. If you are in doubt of what is required then please speak to one of our trained advisors who can discuss your needs.

**Code K3825-S - Small / Pack Size 25**

**Code K3825-M - Med / Pack Size 25**

**Code K3825-L - Large / Pack Size 25**

**Code K3825-XL - X-Large / Pack Size 25**



# Scene Management: Personal Protective Equipment (PPE)



## Latex Gloves

- Maximum protection against exposure to infection
- Powdered for ease of use
- Protect officer & crime scene

Latex gloves are traditionally powdered to lubricate the gloves, making them easier to use. We can offer both latex powdered and non-powdered. Speak to a member of sales time to build your full PPE wardrobe.

**Code K2923-S - Small / Pack Size 100**

**Code K2923-M - Medium / Pack Size 100**

**Code K2923-L - Large / Pack Size 100**

**Code K2923-XL - X-Large / Pack Size 100**



## Kevlar Gloves

- Supple & lightweight
- Level 4 puncturing resistance
- Facilitates movement reducing hand fatigue

Kevlar gloves are a common item used by Scene of crime examiners to protect themselves and the scene from both a health and safety perspective as well as a contamination risk. They are both puncture and tear resistant as a result of the Kevlar material these are manufactured from.

**Code K2944-S - Small / Pack Size 1**

**Code K2944-M - Medium / Pack Size 1**

**Code K2944-L - Large / Pack Size 1**



## Specialist Gloves

- Gauntlet black heavy duty – 17" latex glove heavy duty chemical protection
- Lint free cotton gloves
- Cut resistant gloves used with any nitrile outer glove
- Sterile, Forensic DNA Grade Nitrile Individually packaged

SceneSafe provide solutions and advice on correct glove combinations which are fit for use. Speak to a member of our sales team who can advise on the appropriate option for your requirements.

**Code K2949 - Gauntlet / Pack Size 1**

**Code K2942 - Cotton Glove / Pack Size 1**

**Code K3001 - Cut Resistant / Pack Size 1**

**Code K2996 - Sterile Nitrile / Pack Size 1**

# Scene Management: Personal Protective Equipment (PPE)

## SceneSafe Nitrile Gloves



The SceneSafe powder free nitrile glove provides high performance protection needed against a wide range of chemicals and blood borne pathogens. Durable and strong; sensitivity, comfort and grip are maintained thanks to the use of filler-free nitrile and enhanced processing.



Our glove will also offer you additional protection whilst using UV light sources. The all new SceneSafe UVPlus240 & UVPLUS300 ranges has been tested against BS EN13758-1:2002 which tests for the amount of UVA & UVB rays penetrate through the glove with the UVPlus240 (Short Cuff) & UVPlus300 (Long Cuff) range exceeding the maximum achievable protection rate of UPF 50+.

These gloves conform to EN374-2 (AQL 0.65), EN374-3 Part 1-3 of the testing criteria & EN455 Part 1-4.

Blue

**Code** K2924-S - Small / **Pack Size** 100

**Code** K2924-M - Medium / **Pack Size** 100

**Code** K2924-L - Large / **Pack Size** 100

**Code** K2924-XL - X-Large / **Pack Size** 100

Purple

**Code** K2925-S - Small / **Pack Size** 100

**Code** K2925-M - Medium / **Pack Size** 100

**Code** K2925-L - Large / **Pack Size** 100

**Code** K2925-XL - X-Large / **Pack Size** 100

Purple Long Cuff

**Code** K2925-S-LC - Small / **Pack Size** 100

**Code** K2925-M-LC - Medium / **Pack Size** 100

**Code** K2925-L-LC - Large / **Pack Size** 100

**Code** K2925-XL-LC - X-Large / **Pack Size** 100

# Scene Management: Personal Protective Equipment (PPE)

No PPE is complete unless footwear has been addressed. The threat of contamination to the crime scene by footwear is one of the largest methods of destruction and degradation. Our range focuses on quality high level protection and durability over time.



## Scene Overshoe

- Breathable material
- Offset hole further back
- Robust non-slip sole

Our overshoes have been re-designed to offer a user enhanced look and feel. With durable material it allows longer use without wear.

**Code K3024-S - Small / Pack Size Pair**

**Code K3024-M - Medium / Pack Size Pair**

**Code K3024-L - Large / Pack Size Pair**

**Code K3024-XL - X-Large / Pack Size Pair**



## Examiner Overshoe

- Embossed sole with "POLICE"
- Black in colour
- Elasticated tops to secure

Made from a high quality heat welded PVC material the scene examiner overshoe identifies movements and marks left at a scene by personnel.

**Code K791 - Small / Pack Size Pair**

**Code K770 - Medium / Pack Size Pair**

**Code K771 - Large / Pack Size Pair**

**Code K1203 - X-Large / Pack Size Pair**



## Scene Overboot

- Heavy Duty, white
- PVC non slip sole
- Forensic DNA grade option

The heavy duty Scene overboot is a durable white PCV non slip product which is ideal for long term usage both at an internal or external crime scene. As with many of products this is available as part of a full PPE kit which can be provided as a Forensic DNA grade solution.

**Code K3022 / Pack Size Pair**

As with all our PPE we can produce these in a forensic DNA grade option. This means that the product undergoes a quality controlled DNA denaturing process which is batch tested and analysed for background DNA before being certificated as fit for forensic use. Speak to a member of our team to discuss the new options available.



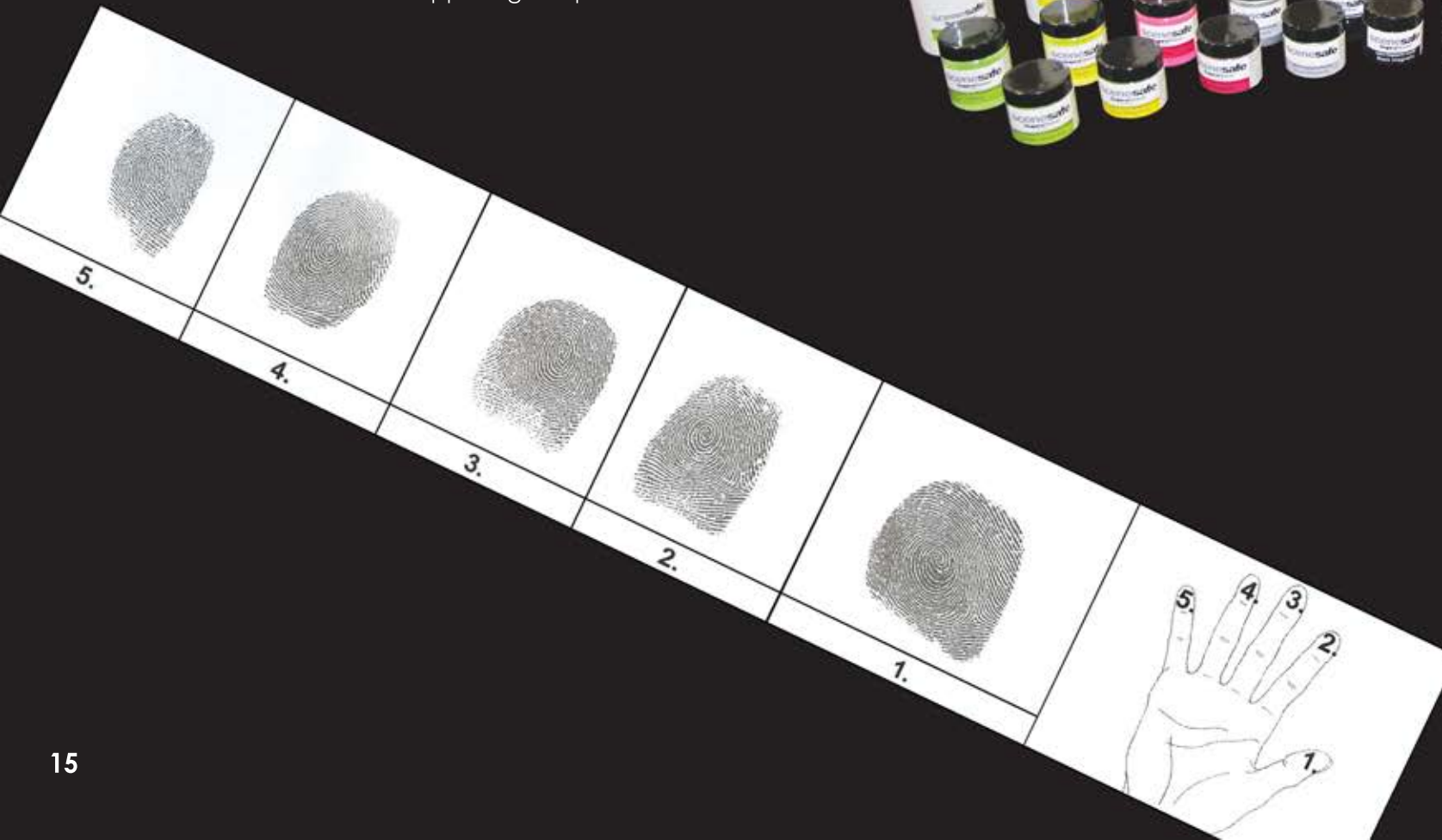
# Fingerprint Development

Fingerprint development has evolved significantly over the last decade, and this is aided by product innovation through SceneSafe research and development.

SceneSafe have designed the products within this section to highlight the essential tools required for fingerprint identification and recovery.

As a progressive forward-looking service provider, SceneSafe listen to what our customers want and respond.

Please contact our sales team to discuss any specific issues or challenges you face with fingerprint development and together we can build a solution that supports good practice.



# Fingerprint Development: Latent Fingerprint Powder

Considered to be the essential powders to have in any CSI tool kit. Black, White & Aluminium powder is ideal for general fingerprinting at a scene.



## Black Latent Fingerprint Powder

- Effective results for volume crime
- Optional additives for climate control
- Workhorse for crime scene development

Black powder is the work horse for scene of crime officers and our new SceneSafe black is far more than just a standard black generic powder. Its particle size allows it to lay within the ridges building up detail but also allowing the fingerprint technician to enhance the print by removing any excess powder without destroying or smudging the image.

**Code K1398-2OZ / Per Pot**

**Code K1398-8OZ / Per Pot**

**Code K1398-16OZ / Per Pot**



## White Latent Fingerprint Powder

- Useful on dark contrasting surfaces
- Use a dedicated brush to reduce cross powder contamination
- Works well with black lifters

White powder although used less frequently to black gives a great contrast to darker surfaces. Also available in a one use disposable forensic DNA grade option. Used with the black SceneSafe lifter or black gel lifter, the white powder contrasts providing excellent detail.

**Code K1399-2OZ / Per Pot**

**Code K1399-8OZ / Per Pot**

**Code K1399-16OZ / Per Pot**



## Aluminium Latent Fingerprint Powder

- Great on non-porous surfaces
- Yields great results on a wide variety of difficult surfaces
- Works best with a SceneSafe zephyr brush

Aluminium is a commonly used development powder for surfaces such as glass, painted surface and metal. It is still regarded as the powder of choice as it develops good contrast on most surfaces. We also offer gold powder which is of similar consistency but proven to contrast well on transparent surfaces, such as glass.

**Code K1007-2OZ / Per Pot**

**Code K1007-8OZ / Per Pot**

**Code K1007-16OZ / Per Pot**

# Fingerprint Development: Latent Fingerprint Powder

SceneSafe have developed an extensive range of fingerprint powders to provide a variety of options when it comes to fingerprint development. With the research and development advances in fingerprint recovery it is now commonplace to include a range of powders to suit variable substrates and or contrast backgrounds found on most items identified at a crime scene. We understand the importance of being able to utilise the correct powder to suit the current condition and SceneSafe powders allow you to do just that.



## Fluorescent Red Latent Fingerprint Powder

- Excellent results on multi coloured surfaces
- Fluoresces with forensic light source
- Allows user to layer the powder, building ridges

SceneSafe Fluorescent Red is an effective tool for powdering over a contrasting background surface. Used in conjunction with the Scene Torch it can yield excellent photographic quality results.

**Code** K1396-2OZ / Per Pot

**Code** K1396-8OZ / Per Pot

**Code** K1396-16OZ / Per Pot



## Fluorescent Green Latent Fingerprint Powder

- Excellent results on dark surfaces
- Fluoresces with forensic light source
- Allows user to layer the powder, building ridges

SceneSafe Fluorescent Green is ideal for powdering over a multi-coloured surface where when illuminated with UV light the particles can be agitated to improve the visibility of the ridge detail.

**Code** K1397-2OZ / Per Pot

**Code** K1397-8OZ /Per Pot

**Code** K1397-16OZ /Per Pot



## Fluorescent Yellow Latent Fingerprint Powder

- Excellent results on multi coloured surfaces
- Fluoresces with forensic light source
- Allows user to layer the powder, building ridges

SceneSafe Fluorescent Yellow is an effective tool for powdering over a contrasting background surface. Utilising the correct fluorescent powder can achieve the best result possible. Our technical experts can provide more guidance on which powder is best for use on various substrates and contrasting backgrounds.

**Code** K1418-2OZ / Per Pot

**Code** K1418-8OZ / Per Pot

**Code** K1418-16OZ / Per Pot



# Fingerprint Development: Magnetic Powder

Our SceneSafe magnetic fingerprint powders are most effective on porous surfaces such as textured paper or uPVC. Offering a variety of shades it allows the user to locate the most sensitive powder for the best possible result.



## Black Magnetic Fingerprint Powder

- Sensitive on light surfaces
- Used with SceneSafe magnetic brush
- High sensitivity level

Black magnetic is mainly used of all the magnetic powders as it contrasts well on any surface other than dark. Easy to use and producing excellent results the SceneSafe black magnetic is an essential tool in the crime scene arsenal.

**Code** K1400-1OZ / Per Pot

**Code** K1400-8OZ / Per Pot

**Code** K1400-16OZ / Per Pot



## White Magnetic Fingerprint Powder

- Sensitive on dark surfaces
- Used with SceneSafe Magnetic brush
- High sensitivity level

For any dark textured surface the SceneSafe white magnetic powder is the powder of choice for most scene of crime professionals.

**Code** K1006-1OZ / Per Pot

**Code** K1006-8OZ / Per Pot

**Code** K1006-16OZ / Per Pot



## Silver Magnetic Fingerprint Powder

- Sensitive on dark & light surfaces
- Flexibility of a combination powder
- Performs well on paper, wood and rougher surfaces

A magnetic silver powder is useful when the contrasting surface is neither dark or light and it can be an effective combination powder for contrast.

**Code** K1010-1OZ / Per Pot

**Code** K1010-8OZ / Per Pot

**Code** K1010-16OZ / Per Pot

# Fingerprint Development: Fluorescent Magnetic Powder

SceneSafe fluorescent magnetic powders have been developed to provide better definition over a range of porous & semi-porous surfaces. Our range of colours allow the user to select the best colour choice for obtaining optimum ridge detail at time of recovery.



## Fluorescent Red Magnetic Fingerprint Powder

- Excellent results on multi coloured surfaces
- Fluoresces with forensic light source
- Allows user to layer the powder, building ridges

SceneSafe Fluorescent Magnetic Red is an effective tool for powdering over a contrasting background surface. It can achieve high level ridge detail and when enhanced with UV light can be yield excellent results.

**Code** K1401-1OZ / Per Pot

**Code** K1401-8OZ / Per Pot

**Code** K1401-16OZ / Per Pot



## Fluorescent Green Magnetic Fingerprint Powder

- Excellent results on dark surfaces
- Fluoresces with forensic light source
- Allows user to layer the powder, building ridges

SceneSafe Fluorescent Magnetic Green is ideal for powdering over a contrasting background surface. With the Scene Torch blue light and the correct goggles it can eliminate background to provide clarity of the print.

**Code** K1402-1OZ / Per Pot

**Code** K1402-8OZ / Per Pot

**Code** K1402-16OZ / Per Pot



## Fluorescent Yellow Magnetic Fingerprint Powder

- Excellent results on multi coloured surfaces
- Fluoresces with forensic light source
- Allows user to layer the powder, building ridges

SceneSafe Fluorescent Magnetic Yellow is an effective tool for powdering over a contrasting background surface. Used with our SceneSafe Torch the visualisation and enhancement is combined in one simple handheld device.

**Code** K3912-1OZ / Per Pot

**Code** K3912-8OZ / Per Pot

**Code** K3912-16OZ / Per Pot

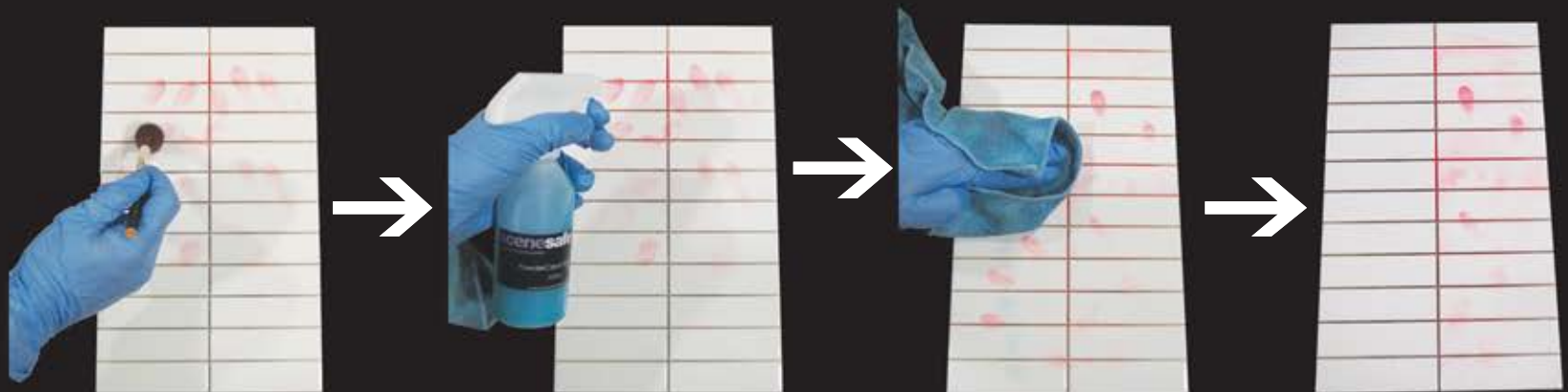
## Fingerprint Development: Powder Clean



Introducing another innovative product from SceneSafe; Powder Clean has been specifically developed to remove the difficulties of cleaning up after using all standard fingerprint powders and powder suspensions. Most practitioners know that this is virtually impossible to achieve to a good standard.

Powder Clean has been designed to encapsulate the powder when used in combination with the microfibre cloth. Powder Cleans formulation enables it to lift the powder cleanly away from the surface it was applied to.

Powder Clean is completely non-abrasive so will not scratch delicate surfaces unlike other popular cleaners that are currently used for this task. Safe to use on all non-porous surfaces whether at the crime scene or within a laboratory environment.



Code K1254 / 125ml Bottle

Code K1255 / 250ml Bottle



# Fingerprint Development: Powder Suspension

Powder Suspension has been developed to enhance latent prints which have been contaminated by water. Simple to use and versatile across many areas of fingermark recovery this is quickly becoming a favourable piece of investigative equipment used by crime scene examiners. Produces excellent results on wet fingerprints found on vehicles or exterior doors. Speak to our technical team on the range of uses that has been identified using this product to date.



## SceneSafe Red Powder Suspension

- Develop across wide range of surfaces
- Used pouring, dipping or spraying
- Easy & quick to use

Using powder suspension red on a contrasting background produces fingerprints which under conventional powdering could not be enhanced or recovered. This method has been developed to spray over the area where the print has been identified and will adhere to the physical properties allowing successful recovery of the print. It also allows for second chance recovery after being lifted.

Code K1403 - 250ml Bottle / Pack Size 1



## SceneSafe Green Powder Suspension

- Develop across wide range of surfaces
- Used pouring, dipping or spraying
- Easy & quick to use

Another benefit of powder suspension over other methods is the ability to develop wet prints and remove wet prints allowing time to dry in transit. This is an effective time saving method which when used will reduce time spent at a scene waiting for items to dry before they can be lifted. Speak to a member of our sales team who can discuss the methods used when using powder suspension.

Code K1405 - 250ml Bottle / Pack Size 1



## SceneSafe Yellow Powder Suspension

- Develop across wide range of surfaces
- Used pouring, dipping or spraying
- Easy & quick to use

As with red & green the yellow powder displays the same functional elements but under forensic light the yellow is a highly fluorescent product. Used in association with SceneSafe exhibit packaging products the results obtained can be easily transported to the laboratory for further analysis.

Code K1404 - 250ml Bottle / Pack Size 1



## SceneSafe Black Powder Suspension

- Develop across wide range of surfaces
- Used pouring, dipping or spraying
- Easy & quick to use

Black suspension is for use on light areas where you need the best contrast possible, white cars and also galvanised steel fence are just a few examples of this products capability.

Code K1406 - 250ml Bottle / Pack Size 1

# Fingerprint Development: Forensic DNA Grade Solutions

With the constant development of DNA analytical methodologies the sensitivity of DNA collection methods has increased resulting in a demand of forensic DNA grade products. SceneSafe have been producing evidence recovery systems for 20 years and as a result methods have advanced to forensic quality standards that can meet this requirement. Below are some key examples of products developed to this Forensic DNA Grade standard. For more options please speak to a member of the team who can develop a custom solution which falls in line with current practices.



## Forensic DNA Grade Disposable Powder

- Laboratory accredited and certified
- Available in various powder types & colours
- Used on major scenes

Primarily used on major crime scenes where the DNA material collected is vital to the development of the investigation and as such all products must be to a Forensic DNA grade to avoid contamination. Our powders are placed through a DNA denaturing treatment followed by a batch testing process carried out by an external (ISO 17025 Accredited) analytical laboratory. Our strict quality control procedures allow the product to be audited and tracked through its entirety to allow for continuous monitoring and effective performance.

**Code K3898-W - White / Pack Size Kit**

**Code K3898-B - Black / Pack Size Kit**



## Forensic DNA Grade Disposable Brush

- Laboratory accredited and certified
- Available in various brushes/types
- Used on major scenes

Once again, as with our powders these follow the same process of denaturing. Brushes of all types and sizes can be selected to be placed through this process, speak to a member of the team to discuss your requirements.

**Code K3900 / Pack Size 1**



## Forensic DNA Grade Disposable Fingerprint Kits

- Laboratory accredited and certified
- Available in various options
- Used on major scenes

Having an off the shelf disposable fingerprint development kit allows the user to ensure that every component including PPE has never been used at another crime scene nor has it been in contact with DNA or other contaminants. Our design team can build a custom kit to suit your needs so that you have a bespoke option fit for your exact needs. We are confident that we can deliver a quality product which meets cost, design and functional requirements.

**Code K3873-W - White / Pack Size Kit**

**Code K3873-B - Black / Pack Size Kit**

# Fingerprint Development: Powder Brushes

An integral piece of equipment to any fingerprint recovery specialist and having a quality product is vital to uncover and retrieve usable prints. SceneSafe have focused on a key set of brushes which cater for all purposes and types. If the brush or size you require is not within the brochure then please speak with our technical team.



Zephyr Brush

- Non shedding
- Quality made
- Transport Tube

Probably the most commonly known type of brush in the CSI fingerprint kit. The zephyr is a vital tool for developing latent prints and the SceneSafe zephyr gives you the control required to expertly recover fingermarks at a crime scene.

Code K1022 / Pack Size 1



Squirrel Hair Brush

- Non shedding
- Quality made
- Various sizes available

Our squirrel hair brushes are made in a high quality way so that there is no shedding of hair when powdering. Available in various in either domed or standard heads.

Code K1023 - Size 4 (Small) / Pack Size 1  
Code K1024 - Size 8 (Medium) / Pack Size 1  
Code K1025 - Size 12 (Large) / Pack Size 1



Skye Brush

- Fibreglass
- Washable for repeat use
- Various sizes available

The SceneSafe Skye brush is a washable powder brush which allows the user to clean and reuse with a different powder type. This enables dual use and avoids powdering with contaminant powders on the brush.

Code K1028 - White / Pack Size 1  
Code K1029 - Brown / Pack Size 1  
Code K1030 - Copper / Pack Size 1



# Fingerprint Development: Powder Brushes



## Marabou Brush

- Various colours available
- Remove excess powder
- Forensic DNA Grade option available

The marabou brush is developed to remove any excess powder which may be present after powdering. This delicate brush allows the powder to be removed without damaging the print which has been recovered.



## Magnetic Powder Applicator

- Spring loaded
- Easy to load
- Robust and strong

Spring loaded magnetic applicator used alongside all the SceneSafe magnetic fingerprint powders is easy to load and clean off after use, saving powder stocks. Available in custom colour options should you wish to change from standard aluminium.

Code K1031 - Black / Pack Size 1

Code K1032 - White / Pack Size 1

Code K1026 - Magnetic / Pack Size 1

# Fingerprint Development: Lift & Recovery

Once prints have been identified it is common practice to photograph and then lift and recover the mark. This is carried out using a variety of options each with their own benefits but it also comes down to personal preference. SceneSafe have developed a selective range which can accommodate all forms of fingerprint recovery.



**SceneSafe Lifter 5cm x 6cm  
(2" x 2")**

- Incorporates photo scale
- Easy peel system
- Available in black , white & clear

Every fingerprint developed for use in a criminal proceeding must be referenced with a scale prior to photographing or electronic submission. As such SceneSafe have developed the lifter to incorporate a right angled scale which removes the need for a separate scale and this provides added value as a time saving device.

**Code K1439-B - Black / Pack Size 25**

**Code K1439-W - White / Pack Size 25**

**Code K1439-C - Clear / Pack Size 25**



**SceneSafe Lifter 5cm x 11.5  
cm (2" x 4")**

- Incorporates photo scale
- Easy peel system
- Available in black, white & clear

Each pack contains 25 lifters and comes in either black, white or clear backing sheets. Selecting the appropriate backing colour allows for optimum contrast to the print which has been recovered.

**Code K1438-B - Black / Pack Size 25**

**Code K1438-W - White / Pack Size 25**

**Code K1438-C - Clear / Pack Size 25**



**SceneSafe Lifter 10cm x 11.5  
cm (4" x 4")**

- Incorporates photo scale
- Easy peel system
- Available in black, white & clear

A key part of recovery for any fingerprint is to record the information at the scene prior to submission. This can be easily achieved by completing the form on the reverse of the backing card capturing Case reference / Date / Location / Print lifted by / Lift No.

**Code K1440-B - Black / Pack Size 25**

**Code K1440-W - White / Pack Size 25**

**Code K1440-C - Clear / Pack Size 25**

# Fingerprint Development: Lift & Recovery

The products listed here are traditional methods of lifting fingerprints and have stood the test of time. Still functional and widely used we continue to champion these tried and tested products.



**Scenesafe Adhesive Lifter**

- Various sizes available
- "Crackback" sides for easy peel
- Available in black, white & clear

Adhesive Scenesafe Lifter is a versatile lifter and can be cut to suit the size required. It is often identified with footwear lifting and SceneSafe can offer this with cobex of the same size in a kit form.

**Code K1127-100 - 7" x 14" / Pack Size 100**



**Lifting Tape**

- Available in 25mm & 50mm
- Easy tear for ease of use
- High quality low tack adhesive

This tape has been a market leader for many years and as such we still have great demand for this product. Due to its low tack high quality adhesive it can lift a mark without aggressively removing the print and destroying the lift. It is easy to tear so you can break the tape without the need for scissors. Tried and tested this is a SOCO favourite.

**Code K1376-25 - 25mm / Pack Size Per Roll**

**Code K1376-50 - 50mm / Pack Size Per Roll**



**SceneSafe Tabs**

- Perforated tabs for ease
- Easy peel tabs
- Quality lift

SceneSafe Crystal tabs are 145mm x 63mm and clear in appearance. They can be used in conjunction with backing cards or cobex to secure the lift. High performance lifter with an easy to use peel tab.

**Code K1161 / Pack Size Roll (500 Tabs)**



# Fingerprint Development: Lift & Recovery

These essential items are fundamental tools for lift & recovery of fingerprints. Supporting day to day activities they are a must for any volume crime scene investigator.



## Cobex lifting

- High quality acetate film
- Various sizes available
- Made to fit template

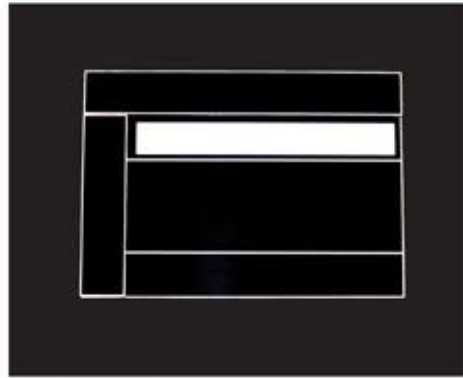
Our cobex sheet is a staple SOCO tool used with any lifting tape to affix the fingerprint to a backing. Widely used as a traditional method cobex is available in a variety of options.

**Code K2572 - 4" x 5" / Pack Size 100**

**Code K1046 - 4" x 6" / Pack Size 100**

**Code K1269 - 7" x 4" / Pack Size 100**

**Code K1044 - 7" x 14" / Pack Size 100**



## Cobex Templates

- Available in 4" x 5" & 4" x 6"
- Footwear template 7" x 14"
- Custom option available

When recording information on a lift it is important to capture the information. Using a template allows the user to reference where, when and by whom the lift was achieved.

**Code K3896 - Size 5" x 4" / Pack Size 100**

**Code K1114 - Size 6" x 4" / Pack Size 100**

**Code K3897 - Size 7" x 14" / Pack Size 100**



## Stationery

- Permanent Pens – medium, fine & superfine black / red
- Permanent marker – black / red
- Handheld magnifier
- Chinagraph pencil white / black

Each item listed above offers quality performance for items which need to deliver when required. Our handheld magnifier used with a white light is ideal to search for latent marks prior to development.

**Code K1162-10 Black / K2724-10 Red**

**Code K2722-10 Black / K3914-10 Red**

**Code K998 - Magnifier / Pack Size 1**

**Code K2720-12 Black / K2721-12 White**



## Faraday Bags

- Secure electronic devices
- Block signal upto 4G+
- Protect evidence from erase

Our new faraday range has been designed as re-usable secure measure to transport electronic devices to a digital laboratory for examination. It is vital during this transfer period to prevent any important data being erased and the SceneSafe faraday provides this solution.

**Code K3895 / Mobile Phone / Pack Size 1**

**Code K3893 / Tablet / Pack Size 1**

**Code K3894 / Laptop / Pack Size 1**

# Fingerprint Development: Lift & Recovery

Gel lifters are now a standard tool used by many forensic practitioners in lifting fingermarks from a variety of surfaces. There are many methods and ways of utilising these gels so speak to a member of our team who can discuss some of the options available.



## Gel Lifters 13 x 18cm (5" x 7")

- Used on most surfaces
- Versatile on application
- Quality lifting device

The 13 x 18cm gel is used widely for recovery of fingerprints. All gels come in black, white or clear, by selecting the correct gel lifter it will allow for best results through contrast.

**Code K1419-B - Black / Pack Size 10**

**Code K1419-C - Clear / Pack Size 10**

**Code K1419-W - White / Pack Size 10**

## Gel Lifters 13 x 36cm (5" x 14")

- Used for footwear
- Versatile on application
- Quality lifting device

When photographing, the gel over sheet can be removed and replaced after use protecting the lifted print. Using a pair of scissors the gel can also be cut to size to meet the needs of a particular job.

**Code K1420-B - Black / Pack Size 2**

**Code K1420-C - Clear / Pack Size 2**

**Code K1420-W - White / Pack Size 2**

## Gel Lifters 18 x 36cm (7" x 14")

- Used on most surfaces
- Versatile on application
- Quality lifting device

The black and the white Gel lifters have a carrier of linen rubber. All Gellifters are protected by a transparent polyester film. Black and white Gellifters can easily be marked, since the white linen rubber backing can be written on. The transparent Gellifters have non-stick paper edges, which makes it easy to mark them and to lift the cover sheet.

**Code K1421-B - Black / Pack Size 2**

**Code K1421-C - Clear / Pack Size 2**

**Code K1421-W - White / Pack Size 2**

## Gel Lifters 36 x 45cm (14" x 17")

- Used on most surfaces
- Versatile on application
- Quality lifting device

The largest size of the range, the 36 x 45cm lifting sheet can lift a whole area if required. Gels can also be used with fingerprints which have undergone cyanoacrylate fuming and staining. Used effectively these lifters are a superb product for use in the field of forensic recovery.

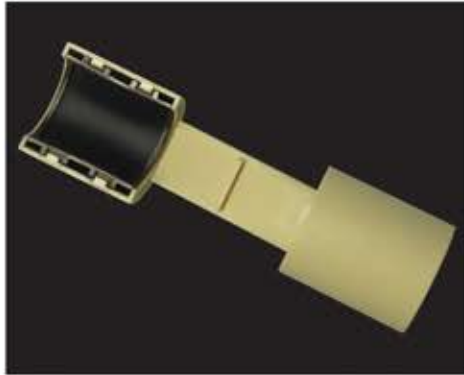
**Code K1422-B - Black / Pack Size 4**

**Code K1422-C - Clear / Pack Size 4**

**Code K1422-W - White / Pack Size 4**

# Fingerprint Development: Fingermark Recovery

Obtaining a set of wet prints for identification purposes has been a widely used practice by police forces for decades. SceneSafe have produced a range of products under this category that simplify and increase the delivery of eligible prints and address usability.



## SceneSafe Inking Tool

- Simple to use
- Excellent prints
- Requires no previous experience

The SceneSafe Ink Tool was originally designed to recover fingerprints in theatre of military operations. The tool incorporates a semi-inkless pad which has a curved arch to adhere ink to each part of the finger without the need to roll. At the opposite end the tool allows a fingerprint card to be inserted and record each print in turn using a push pull method. Requires little to no skill or previous experience and delivers eligible useable prints every time. Wipes clean and lasts for 5,000 individual prints.

**Code K1053 / Pack Size 1**



## Fingerprint Cards

- Available in other languages
- Fits the SceneSafe Ink Tool
- Set of 50 left or right

The SceneSafe fingerprint card was designed for use with the Ink Tool and can be inserted into the device to quickly capture prints. The cards can be custom made to any language and incorporate pictures to allow for easy reference when taking prints.

**Code K1054-L - Left / Pack Size 50**

**Code K1054-R - Right / Pack Size 50**

**Code K1054-PP - Palm Print / Pack Size 50**



## Ink Pad

- 65mm x 155mm
- Wipe clean pad
- Black ink

Used repeatedly this print pad delivers excellent performance over time and delivers great results. The semi inkless ink allows an easy wipe clean function and avoids the mess and clean up found in traditional ink and slab methods.

**Code K1037 / Pack Size 1**



## Mini Ink Pad

- Circular 50mm diameter
- Stain free
- Easy to use & low cost

This easily transportable ink pad is a favourite carried by officers on the move as it fits compactly in their utility belt along with foldable fingerprint cards. Can be offered as a useful elimination tool in kit form.

**Code K1038 / Pack Size 1**



# Fingerprint Development: Fingerprint Recovery

Still an essential tool for capturing wet prints the ink & slab method continues to be a requirement by Police forces around the world.



## Ink Tube

- 3 x 8ml tubes
- Requires minimal amount per slab
- Produces high quality prints

When using traditional inking techniques clean-up is common practice. Using SceneSafe clean up products enables effective cleaning after usage.

**Code K1042-3 / Pack Size 3**



## Inking Slab

- Copper covered
- Rubber base preventing sliding
- Solid durable plastic

Ink slab dimensions are 260mm x 95mm. It has a copper covered surface with a rubber base to prevent slippage when inking.

**Code K1043 / Pack Size 1**



## Inking Roller

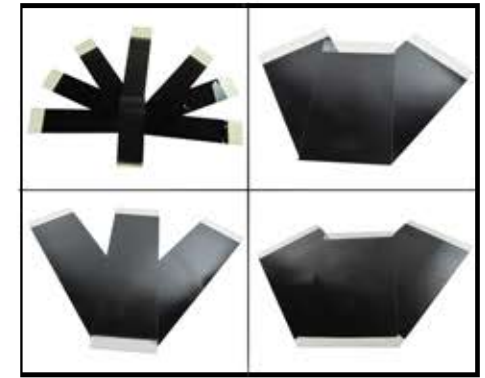
- Available in 50mm, 75mm & 100mm
- Durable plastic
- Easy clean after use

Rollers are integral for ink distribution and our rubber rollers offer good placement across the ink slab. Easy to clean and simple to use.

**Code K1039 - 50mm Roller / Pack Size 1**

**Code K1040 - 75mm Roller / Pack Size 1**

**Code K1041 - 100mm Roller / Pack Size 1**



## Pre-Inked Strips

- 1" x 5"
- 3" x 10"
- 3" x 5"
- 6" x 10"

Pre-inked strips are a use once concept which has a preloaded amount of ink applied to a strip. This allows ease of use and avoids the need for separate slab & ink. Ideal for elimination purposes and can be supplied in a kit form provided to the person for self-use and return. This kit form speeds up elimination and frees up time spend by officers allowing the kit to be left for self-use.

**Code K1033 - 1" x 5" / Pack Size 100**

**Code K1034 - 3" x 10" / Pack Size 100**

**Code K1035 - 3" x 5" / Pack Size 100**

**Code K1036 - 6" x 10" / Pack Size 100**

# Fingerprint Development: Footwear & Palm Print Recovery

Shoe marks and palm are now common methods of obtaining an automatic identification to fingerprints. Our inkless kits are easy to use & contain all of the components needed.



## Footwear/Shoe Print Kit

- Semi-inkless pad
- 200 sheets per kit
- Paper refills available

Using an inkless system this footwear kit allows impressions to be taken and examined for identification purposes. The ink pad can take up to 400 impressions and a refill pack can be supplied upon request.

Code K250 / Pack Size 1

Code K251 - Refill Papers/ Pack Size 1



## Palm Print Kit

- Semi-inkless pad
- 200 sheets per kit
- Raised arched pad

Designed to capture an entire palm print using a raised arch to aid the distribution of semi-inkless solution across the area. Idea for use at both crime scenes, stations and for elimination purposes.

Code K252 / Pack Size 1

Code K253 - Refill Papers/ Pack Size 1

# Forensic Management: Casting Impressions



## SceneCast

- SceneCast 1 – 15 Mins setting time / High Viscosity
- SceneCast 2 – 10-12 Mins setting time / Medium Viscosity
- SceneCast 3 – 6-8 Mins setting time / Snow Conditions

SceneCast offers a complete kit for taking casts in a rapid speed which reduces time spent at a crime scene waiting for articles to dry. These compact cast kits are available in 3 formats to suit most conditions.

**Code K1252 - Scenecast 1 / Pack Size 1**

**Code K1253 - Scenecast 2 / Pack Size 1**

**Code K1450 - Scenecast 3 / Pack Size 1**



## Casting Powders

- Quality range of powder type
- Easy to Use
- Custom kit options available

Casting is a simple process and SceneSafe have developed a number of casting options for clients over the years.

**Code K1128 Crownstone / Pack Size 1kgs**

**Code K1128-25 Crownstone / Pack Size 25kgs**

**Code K751 Denstone / Pack Size 1kgs**

**Code K751-25 Denstone / Pack Size 25kgs**



## Casting Frame

- Adjustable sizing
- Lightweight
- Custom Kits Available

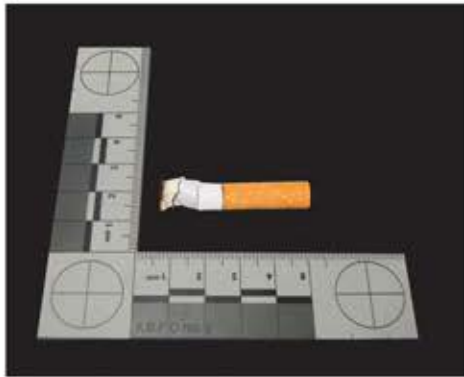
A rigid aluminium frame which can be adjusted to suit the dimensions of the required area to be cast. It is lightweight, portable and can be used across all SceneSafe casting powder products.

**Code K1190 / Pack Size 1**



# Fingerprint Development: Photographic Scales

When capturing fingerprints by photography a scale must be used to reference the image size. SceneSafe have aided this process by offering a selection of scales for most scenarios found at a crime scene.

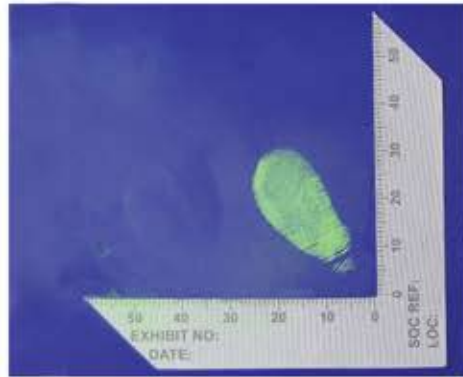


## Right Angled Scale (ABFO)

- 5cm x 5cm
- Durable
- Calibrated

Our right angled scale or commonly known as ABFO scale as originally developed by the American Board of Forensic Odontology, has become an industry recognised standard for macrophotographic scales. 1 mm thick L shaped rigid plastic.

**Code K1249 / Pack Size 1**

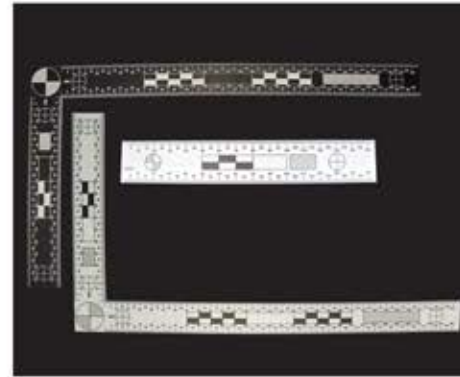


## Adhesive Right Angled Scale

- Easy peel adhesive label
- 8 labels per sheet
- Grey scale, calibrated

A simple advancement on the ABFO, our SceneSafe adhesive scale allows the user to simply adhere the label take the photograph and dispose of after use. Low tack so no residue remains and easy to remove. Very useful for vertical prints/marks.

**Code K3902 - 8 Scales / Pack Size 1**



## L Shaped Scale

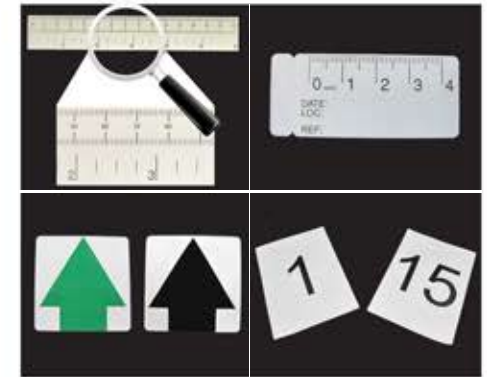
- Reversible Scale
- Black & White
- 15cm x 30cm Scale + 15cm Scale

A reversible 15cm x 30 cm scale to use on both light and dark backgrounds to aid contrast. White and black bands offer reference marks which are important when the image is being examined.

**Code K1248/ Pack Size 1**

**Code K1248-W-MAG / Pack Size 1**

**Code K1248-B-MAG / Pack Size 1**



## Adhesive Scales/Arrows

- 15cm adhesive scale
- 25mm adhesive scale
- Arrow adhesive labels
- Adhesive numbers 1-99

When a crime scene is processed using non-permanent adhesive markers is essential to reference points of interest and importance. We have the ability to offer a custom solution and can create the product to fit your practice. Speak to a member of our team to discuss our requirement.

**Code K2457-1000 / Pack Size Roll (1000)**

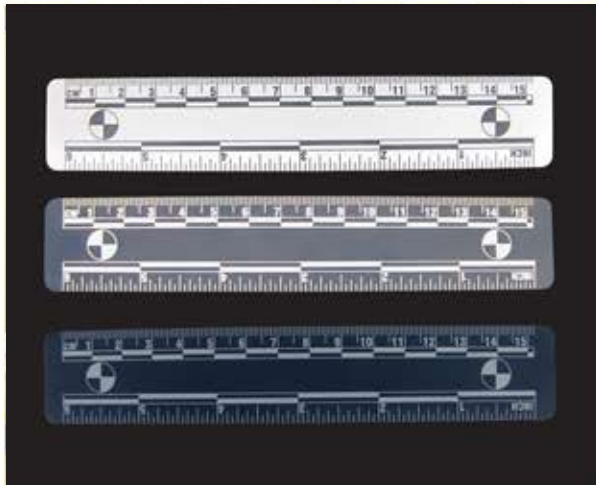
**Code K1111 / Pack Size Roll (1000)**

**Code K2328-1000 / Pack Size Roll (1000)**

**Code K3901 - 1-99 / Pack Size 1**

# Fingerprint Development: Photographic Scales

Using a scale which has been calibrated correctly is essential to capture an image to be used as forensic evidential material. Our scale range are quality manufactured and calibrated to be a "fit for purpose" product.



## 6" Forensic Scale

- Calibrated in cms & inches
- Available in different colours
- Cross hairs at both ends

Our scales come in a variety of colour options such as black, white, grey, yellow & blue. Calibrated to both inch & cm's and quality made to ensure it is a robust tool for every day use.

**Code K3865 - Black / Pack Size 1**

**Code K3866 - White / Pack Size 1**

**Code K3867 - Grey / Pack Size 1**

**Code K3868 - Yellow / Pack Size 1**

**Code K3869 - Blue / Pack Size 1**



## 6" Magnetic Forensic Scale

- Calibrated in cms & inches
- Available in different colours
- Cross hairs at both ends

Our scales come in a variety of colour options such as black, white, grey, yellow & blue. Magnetic scales allow a secure placement on various surfaces at angles which normal scales could not adhere to.

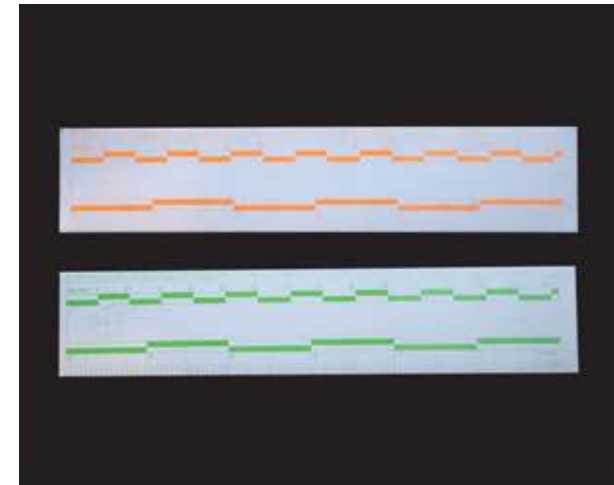
**Code K3865-MAG - Black / Pack Size 1**

**Code K3866-MAG - White / Pack Size 1**

**Code K3867-MAG - Grey / Pack Size 1**

**Code K3868-MAG - Yellow / Pack Size 1**

**Code K3869-MAG - Blue / Pack Size 1**



## 6" Fluorescent Scale

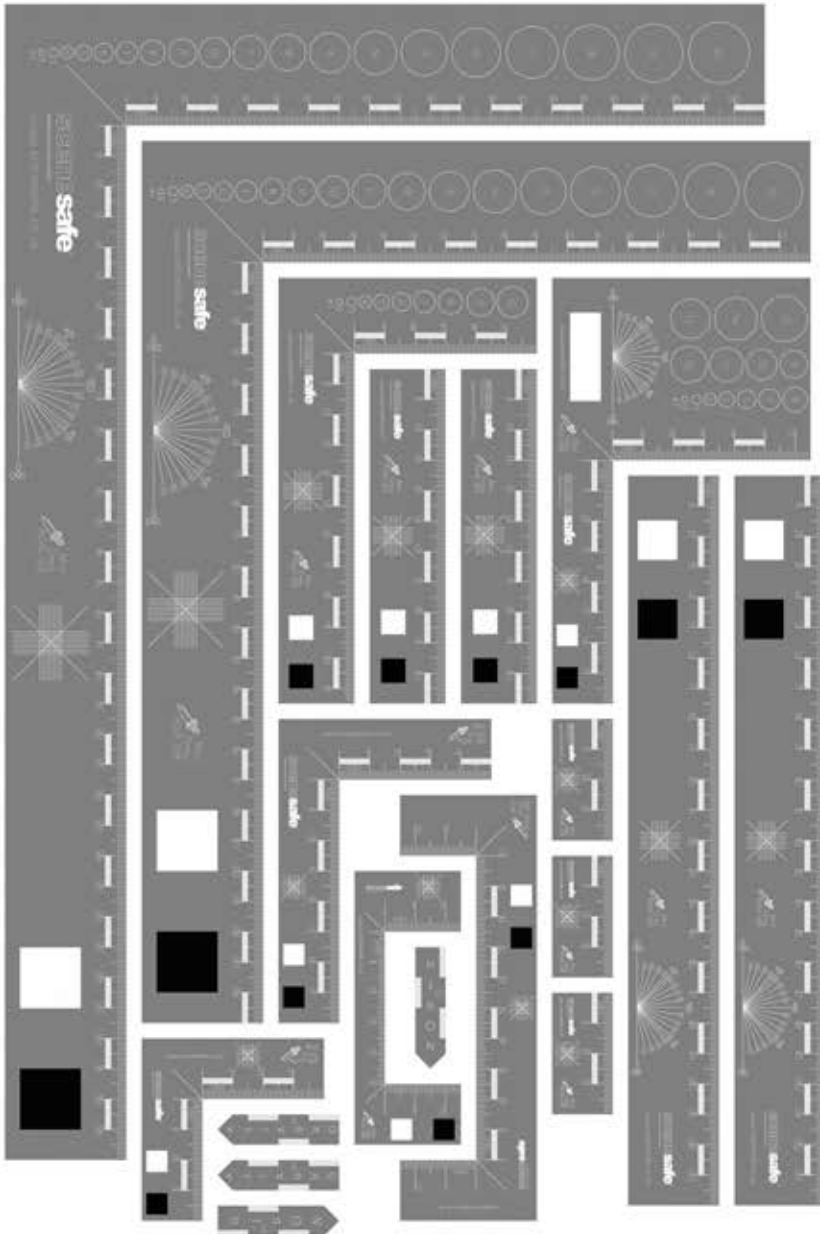
- Calibrated in cms & inches
- Available in orange or green
- Cross hairs at both ends

Fluorescent scales are essential when photographing using a forensic light source. Available in orange or green with standard inch & cm's with cross hairs at both ends.

**Code K3870 - Orange / Pack Size 1**

**Code K3871 - Green / Pack Size 1**

# Fingerprint Development: Photographic Scales



## Scale Kit

A truly unique set of forensic photography scales, meeting today's demands in forensic imaging. These scales are used for image capture, post image processing and image/evidence analysis.

This long overdue solution will enhance the photographic arsenal which every scene of crime officer should carry as standard practice.

Contained within this full scale set it will allow the photographer to scale most scenarios. Provided in a leather wallet its accessible and each piece is secured in place.

We feel this scale set is to become the market leader in forensic photographic scales and the level of detail and accuracy will not be matched.



# Evidence Collection

The collection and preservation of evidence is a vital function of any crime scene department. Its our aim to enable and equip each crime scene technician with what they require to aid their existing practices and explore new innovative collection and recovery methods.

SceneSafe have worked to deliver a robust method of collection using products "fit for purpose" and which can be adapted to the surroundings of both climate and user.



**scenesafe**  
evidence recovery systems

Tel: +44 (0) 1621 786654

Police Intervention

Submission Identification

**Evidence Recovery**

Contamination Health & Safety

Prevention Strategy Integrity

DNA Forensic Grade

EVIDENTIAL QUALITY

SCENE EXAMINATION

# Evidence Collection: Tamper Evident Packaging

Tamper evident packaging has evolved to offer a high security method to protect both the evidence and the integrity of user. Through a number of security features it allows the evidence to be secured, tracked and traced with clean indications of any tampering to the articles contained within.



## Tamper Evident Bags

- Unique moisture indicator
- Void/STOP on seal
- Unique Sequential numbering & barcode

Our classic tamper evident bags are available as a custom product representing your police force or department. We can incorporate logo, artwork, text and produce these in any language. The tamper evident security benefits cover all eventualities and strengthen the integrity of the evidence to be stored and submitted for court room use.

**Code K1004-500 - Small / Pack Size 500**

**Code K1003-500 - Medium / Pack Size 500**

**Code K1002-500 - Large / Pack Size 500**

**Code K1047-100 - Bulk / Pack Size 100**



## Breathable Tamper Evident Bags

- Allows damp or wet evidence to dry without degradation
- Breathable reverse
- Secures evidence with same functionality

Our breathable tamper evident bags are a requirement for wet or damp evidence to be collected at a scene. The breathable reverse allows the evidence to dry out without the degradation to the evidence contained within. For DNA samples being collected and transported to the lab it prevents a micro climate which would destroy or degrade. It does not allow moisture to exit the bag but will allow air to dry the item.

**Code K1050-500 - Small / Pack Size 500**

**Code K1051-200 - Medium / Pack Size 200**

**Code K1052-300 - Large / Pack Size 300**



## Drug Collection Tamper Evident Bags

- Store separately and securely to general evidence
- Same functionality to classic T/E bags
- Available as a custom option

Drug collection tamper evident bags were designed to separate drug evidence to be stored in a isolated location to general criminal evidence. Following the same functionality and security features as classic tamper evident bags it is a useful method of collection.

**Code K2093-500 - Small / Pack Size 500**

**Code K2094-500 - Large / Pack Size 500**

# Evidence Collection: Tamper Evident Packaging



## Digital Media Bags

- Secure media digital hard copy evidence
- Gold level security closure 162mm x 235mm
- Header printed with CJ Act panel and sequential numbering

Tamper evident to all known methods of attack including opening at room temperature, extreme temperatures, solvents, pre-tampering, tape removal. Media storage devices of various sizes and data devices such as USB sticks, CD's and memory cards.

**Code K2095-500 / Pack Size 500**



## Opaque Stock Bag

- Secure evidence visibility from view
- Plain outer bag
- Various sizes available

If it is required to restrict certain evidence or documents from view. We offer the opaque tamper evident bag to enable this function.

**Code K2106-500 - Small / Pack Size 500**

**Code K2107-500 - Medium / Pack Size 500**

**Code K2108-500 - Large / Pack Size 500**



## Clear Stock Bags

- Plain bag, no text or labelling
- Barcode / Sequential numbering
- Various sizes available

We offer plain tamper evident bags as using a barcoded electronic system text is not always required to be recorded on the outer packaging. It offers the same level of security as all our tamper evident bags.

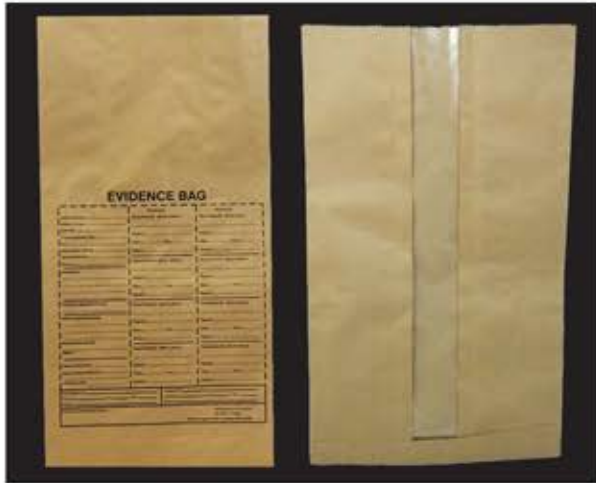
**Code K3903-500 - Small / Pack Size 500**

**Code K3904-500 - Medium / Pack Size 500**



# Evidence Collection: Evidence Packaging

Evidence packaging encompasses a wide range of items maintaining good evidential integrity is essential to support a criminal investigation and SceneSafe understand and accommodate this practice. In situations where plastic packaging is unsuitable, our range of paper evidence bags is available.



## Window Paper Sacks

- Printed CJ Act panel
- Window for viewing evidence once sealed
- Custom options available
- Small (S) 280mm x 75mm x 560mm
- Medium (M) 420mm x 100mm x 710mm
- Large (L) 485mm x 120mm x 960mm

Still used as a popular method for securing evidence, the paper sack is available in a variety of options and sizes. Our CJ Act window sack allows the evidence to be recorded at time of collection and viewed when under examination.

**Code K2136-50 - Small / Pack Size 50**

**Code K2135-50 - Medium / Pack Size 50**

**Code K2134-50 - Large / Pack Size 50**



## Police Evidence Sacks

- Window & Non-window
- Text "Police Evidence" on front
- Custom options available
- Small (S) 280mm x 75mm x 560mm
- Medium (M) 420mm x 100mm x 710mm
- Large (L) 485mm x 120mm x 960mm

Our "Police Evidence" paper sacks are available in either window or non-window options. The bag is available per pack of 50 and is available in small, medium, large.

**Code K1139-50 - Small / Pack Size 50**

**Code K2138-50 - Medium / Pack Size 50**

**Code K2139-50 - Large / Pack Size 50**



## Sealable Window Paper Sacks

- Adhesive Tab to securely seal
- Save time collecting evidence
- Custom options available
- X-Small (XS) 150mm x 490mm
- Small (S) 355mm x 500mm
- Medium (M) 510mm x 640mm
- Large (L) 600mm x 865mm

This time saving and easy to use product now meets end user approval and is starting to replace the older traditional paper sack which CSI's find to be a laborious and timely way to seal evidence.

**Code K2143-50 - Small / Pack Size 50**

**Code K2144-50 - Medium / Pack Size 50**

**Code K2145-50 - Large / Pack Size 50**

**Code K2147-50 - X-Large / Pack Size 50**



# Evidence Collection: Exhibit Boxes

Preparing evidence for exhibiting in court is essential to support the prosecution. Correctly exhibiting evidence is vital to show an identifiable auditable chain of events from the moment the article was seized to presentation in the court room.



**Mobile Phone Box**

- Complete storage for mobile phones
- 180mm x 110mm x 65mm
- Insert for securing device

A window box enables evidence to be packaged and viewed without opening it, leaving the security seal intact. It also prevents the evidence being contaminated or compromised.

**Code K987 / Pack Size 1**



**Drinks Can Boxes**

- Windowed to view evidence
- Anti-contamination tool provided
- Lid securing mechanism

Windowed collection and transport box featuring an anti-contamination tool to pick up and transfer the can to the box without the need to handle it directly (will also protect fingerprints on the external surface of the can). The tool is then used to hold the can in place whilst in transport by attaching to the lid.

**Code K453 - 330ml / Pack Size 1**

**Code K454 - 500ml / Pack Size 1**



**Window Boxes - Hand Gun/ Rifle**

- Window for visual examination
- Grid of push-out holes for securing
- Robust & Strong

A sturdy brown box suitable for the storage and transport of a hand gun. A grid of pushout holes in the base allows different shaped/sized weapons to be held in place in the box using cable ties. A window allows for visual examination/identification of the enclosed weapon.

**Code K818 - Handgun / Pack Size 1**

**Code K819 - Rifle / Pack Size 1**

Other sizing available on request, please contact us for further information

# Evidence Collection: Exhibit Boxes



## Forensic Boxes

- Flush fit lid for ease of sealing
- CJ Panel (Medium and A4 only)
- Robust construction

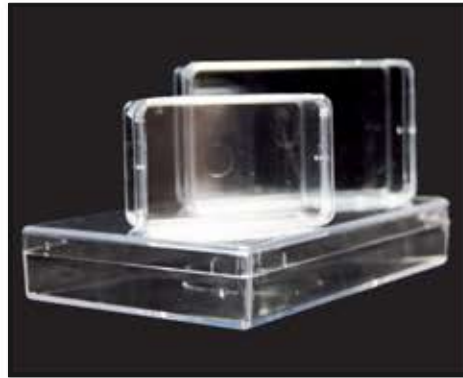
Versatile strong evidence boxes with flush fitting lid, for ease of taping around edges. CJ panel on medium and A4 boxes for traceability.

Size: Small – 100 x 125 x 38mm, Medium – 225 x 127 x 38mm, A4 – 308 x 215 x 38mm

**Code K620 - Small / Pack Size 1**

**Code K630 - Medium / Pack Size 1**

**Code K645 - A4 / Pack Size 1**



## Transparent Exhibit Boxes

- Made of clear plastic for visibility
- Strong, durable & robust
- Tight push fit lid

General purpose forensic exhibit boxes provided with stick on CJ Act panel & tamper evident seal for chain of custody purposes. Aid visual representation in court.

Small - 58 x 38 x 22mm  
Medium - 79 x 47 x 22mm  
Large - 140 x 79 x 60mm

**Code K801 - Small / Pack Size 1**

**Code K802 - Medium / Pack Size 1**

**Code K803 - Large / Pack Size 1**



## Exhibit Labels

- Capture full evidential information
- Standard tie on but also available as adhesive option
- Pack of 100

The exhibit label is commonly used as a tie on label for tracking an audit trail from time of seizure to presentation at court. We offer both tie & adhesive options. If you need a custom solution then contact our sales team who can assist with your request.

**Code K757-100 / Pack Size 100**



## Tamper Evident Tape

- Tamper Evident Closure
- Perforation & unique numbering every 150mm
- "OPENED" message

Tamper evident tape used in conjunction with our packaging tubes allows the evidence to be secured and recorded for processing. Our tapes are available as off the shelf or custom made tapes.

Sizes - Small - 73 x 20mm, Medium - 98 x 30mm  
Large - 150 x 45mm

**Code K1121-S / Pack Size 1 Roll**

**Code K1121-M / Pack Size 1 Roll**

**Code K1121-L / Pack Size 1 Roll**

# Evidence Collection: Weapons Packaging

When collecting and packaging a firearm found at a scene it is vital to maintain levels of anti-contamination protocols to avoid transfer or loss of gun shot residue. SceneSafe have developed a range of kits to collect firearms of different sizes. We distinguish position by providing 2 sets of coloured gloves, for both firearms officer & scene of crime officer.



## Forensic DNA Grade Hand Gun Collection Kit

- Certified for forensic use
- All components included
- Quick & easy to use

With the increase in sensitivity of both DNA and GSR techniques SceneSafe receive more and more requests for forensic grade equipment. Our gun collection kits are sealed and ready to use and can be deployed when needed in a firearms investigation.

Each kit contains all components required to package, record and transport the item.

Code K3905-ETO / Pack Size 1



## Forensic DNA Grade Rifle Collection Kit

- Certified for forensic use
- All components included
- Quick & easy to use

Produced in a clean room environment and packaged with the end user in mind, we have put together a kit which packages, records, transports and exhibits with full audit and tamper evident capability.

Code K3906-ETO / Pack Size 1

# Evidence Collection: Weapons Packaging



## Metal Ended Weapons Tubes

- Metal ends to prevent penetration
- Robust, durable plastic
- Telescopic to adjust to fit

SceneSafe provide a comprehensive selection of weapons tubes in a range of sizes. Our metal ended tubes are available in 3 standard sizes as shown below. Metal ended to prevent injury when packaging sharp objects such as knives or glass.

**Code K447 - Small - 30mm / Pack Size 1**

**Code K448 - Medium - 45mm / Pack Size 1**

**Code K449 - Large - 80mm / Pack Size 1**



## Evidence Tubes

- Used for non-sharps
- Wide range of sizes
- Telescopic to adjust to fit

Used to store any items where there is no risk to the user when packaging. Same qualities as metal ended but without the need for stab prevention.

**Code K1321 - Small - 30mm / Pack Size 1**

**Code K1322 - Medium - 45mm / Pack Size 1**

**Code K1208 - Large - 65mm / Pack Size 1**



## Square Evidence Tubes

- Time Saving
- Easy to Package
- Suitable for all mobile phone sizes

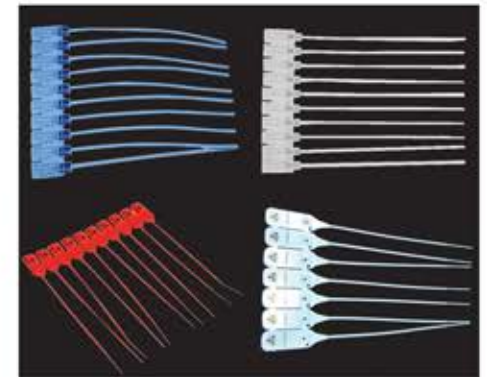
Replacing the need for traditional card box packaging, the universal container securing evidence in place to ensure that evidence is not damaged during the transportation back to the laboratory.

Also available with end caps to ensure the users safety while transporting sharp objects.

**Code K202 - 32mm / Pack Size 1**

**Code K203 - 45mm / Pack Size 1**

**Code K204 - 65mm / Pack Size 1**



## Tamper Evident Seals

- Tamper Evident
- Unique sequential number
- Single use only

Available in various colours, our tamper evident seals are used on both boxes and bags to secure the evidence for transit and storage.

**Code K3858-100 / Pack Size 100**

**Code K2238-100 / Pack Size 100**

**Code K2410-100 / Pack Size 100**

**Code K2425-100 / Pack Size 100**



# Evidence Collection: Specialist Packaging

At SceneSafe we excel in delivering product solutions to combat those challenges faced by the crime scene examiner. Below are just some of the examples now available for everyday use.



## Financial Packaging Kit

- Developed for Government agencies
- Widely used by global agencies
- Seizure of cash

Packaging of cash has to be carried out in a secure and methodical manner. Our financial packaging kit provides all the items required to perform this task. K718 can be used as an extension kit should more components be required.

Code K717 / Pack Size 1

Code K718 - Large Module / Pack Size 1



## Recovery Packaging Kit

- Developed for Customs
- Contains all evidence packaging components
- For use on raid scenarios where speed is important

Designed for use in a "knock" scene environment. "knock" is where police have entered a property under warrant with force and seized vital evidence rapidly. As with all SceneSafe kits we are happy to discuss the components and develop a kit fit for your exact purpose.

Code K711 / Pack Size 1



## Evidence Collection Kit

- UN Specification
- Secure packaging box
- Used across multiple functions

Our standard evidence collection kit is designed for agency use where no specified police force is needed. This could be civil litigation or private investigation practice.

Code K1144 / Pack Size 1



## Tapes and Labels Kit

- Tools for a "knock" scene
- Barrier tapes/adhesive tapes
- Designed for customs

A kit containing a range of adhesive & barrier tapes, CJ and plain labels and assorted pens & tools for the use during attendance at a crime scene or 'knock'.

Code K712 / Pack Size 1

# Evidence Collection: Body Retrieval

Part of crime scene investigation involves major crimes such as murder or unexplained death, as such it is necessary to offer a range of products to assist with the collection, preservation and recording of such situations.



## Adult Heavy Duty Body Bag

- Extra Heavy Duty
- Flame retardant PU coated nylon/polyester
- size 1000mm (39") wide x 2420mm (95") long

Colour black, flame retardant PU coated nylon / polyester, supplied with 3 sided heavy duty double zipper, clear document pouch 100mm (4") x 230mm (9") and 6 fibreglass reinforced handles.

Code K436 / Pack Size 1



## Adult Body Bag - White

- PEVA LDPE (Low density polyethylene)
- Non-toxic material with acetic acid mixture.
- Maximum weight to be carried is 200 lbs

With a 3 sided zip and dimensions of 35" x 82" this is a versatile body bag for general purpose use.

Code K437 / Pack Size 1



## Child/Infant Body Bag

- Size 28" x 48
- White in colour
- PEVA LDPE (Low density polyethylene)

With 2 sided zip and ID pocket on exterior. Non-toxic material with acetic acid mixture.

Code K439 - Child / Pack Size 1

Code K465 - Infant / Pack Size 1



## Body Recovery Kit

- Selection of packaging items
- Includes necessary PPE
- Can be added to Modular System

Should a cadaver be found at a scene, this retrieval kit provides all the required items needed to package, record and transport both the body and any articles/possession which may be found.

Code K435 / Pack Size 1

# Evidence Collection: Arson Investigation

Arson scene investigation takes on a new set of challenges to secure evidence and to avoid contamination of the scene. Using non-petrochemical products we have a range of products which are designed for the effective retrieval, storage and transportation of evidence.



## Arson Collection Kit

- Liquid & solid collection
- Robust portable solution
- Training available

Gathering arson scene evidence is critical to the successful development of the criminal investigation.

By providing an arson kit the CSI can uncover crucial materials which can be analysed and used to convict a suspect of involvement in the crime.

The kit includes all the products needed for gathering both solid and liquid physical evidence as well as clothing or other materials found at the scene.

**Code K3907 / Pack Size 1**



## Nylon Bags

- Eliminates the potential for cross-contamination
- Long term storage
- Made using Rilsan 11

Nylon evidence bags are designed to hold accelerant and explosive evidence without permeation and virtually eliminates the potential for cross-contamination from propellant fumes in long-term storage.

Various Sizes Available



## Liquid Accelerant Container

- Round cylindrical shape
- Cap & seal
- Available in 3 sizes

The collection of fire debris is required for analytical examination at the laboratory. Using a range of accelerant tins allows the user to collect samples for transport.

Available with custom outer CJAct label for evidential integrity.

**Code K2253 - 125ml / Pack Size 1**

**Code K2255 - 250ml / Pack Size 1**

**Code K2256 - 1000ml / Pack Size 1**



## Solid Accelerant Container

- Wide opening for solids
- Cap & seal
- Available in 3 sizes

When collecting solid debris the same principles are taken for transporting evidence. The wide opening allows ease of use when transferring solid evidence found at a scene.

Available with custom outer CJAct label for evidential integrity.

**Code K2257 - 125ml / Pack Size 1**

**Code K2258 - 250ml / Pack Size 1**

**Code K2261 - 1000ml / Pack Size 1**

# Forensic Laboratory Processing

With so many products available for the laboratory sector we have tried to create a specific targeted range of core items that are geared towards crime scene investigation lab processing.

SceneSafe have access to a much wider portfolio of products so please speak to our sales team who can help to develop a key custom price list for your exact requirements.





# Forensic Laboratory Processing: Forensic Marking

Chemical processing within the lab is a wide and diverse area of forensics. Talk to us about what you need and we can develop the right solution.



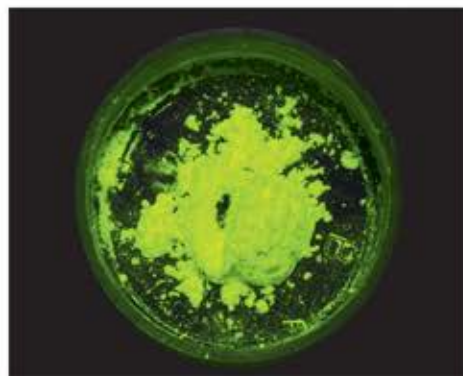
## Etching Kit / Electro Etch Solution

- Easy to use, kit instructions
- All components for thorough analysis
- Supplied in robust case

Comprehensive, easy to carry kit for the chemical restoration of erased marks in metal. Contains components and different chemicals for more effective restoration in different metals (also includes acetone for removal of oil, grease and re-sprayed paint). Range of refills also available.

Code K231 / Pack Size 1

Code K260 / Pack Size 1

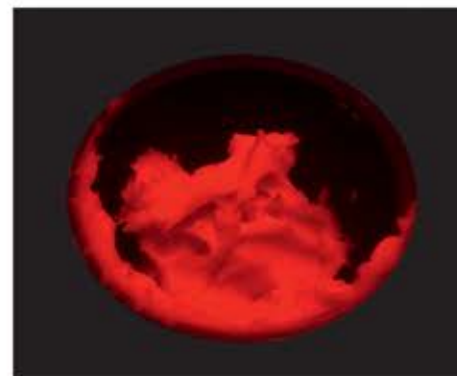


## Covert Marking Kit

- Standard covert marking
- Use Light Kit see page 59
- Specific application use

General-purpose marker product. Two-part single use kit containing the items necessary for applying an 'invisible' transferable marker to property and for the subsequent recovery of marker traces from the hands of a suspect. Contains both marker powder (1g) and marker grease (2g) as standard. If grease or powder-only are required for your specific operation,

Code K241 / Pack Size 1

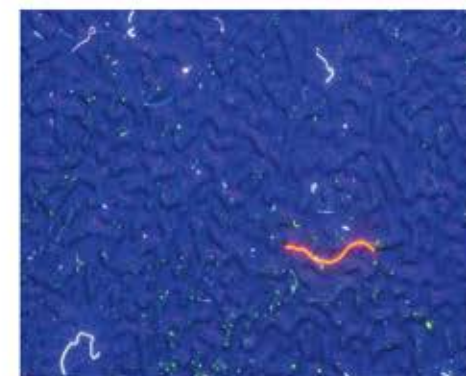


## Unique Covert Marking Kit

- Unique covert marking
- Use Light Kit see page 59
- Specific application use

Special purpose marker product suited to high priority cases where it is vital to demonstrate absolute contact with item/scene. Two-part single use kit containing items necessary for applying an 'invisible' transferable marker to property and for the subsequent recovery of marker traces from the hands of a suspect. Contains both marker powder (2g) and marker grease (4g) as standard.

Code K243 / Pack Size 1



## Fibre Marking Kit

- Covert application
- Use Light Kit see page 59
- Specific application use

General-purpose fibre marker product. It is a two-part single use kit containing the items necessary for applying a transferable marker and for the subsequent recovery from a suspect.

Code K244 / Pack Size 1

# Forensic Laboratory Processing: Lab Essentials

Within a forensic lab so many items are used and we can offer most of these from our extensive range. Send us your requirements and we can tailor a price list to meet your lab needs.



## Forensic DNA Grade Swabs

- Tamper Evident
- Protective Tube
- Medical & Laboratory Grade

Our swabs are available in various options and we have hand picked some of the most popular for the crime scene equipment range. If there is a particular swab you require then contact our sales team and we can provide the solution.

### Code K1147 / Pack Size 100

#### Rayon Tip Swab

Sterile Dryswab with plastic shaft in individual labelled transport tube. Each tamper evident label is clearly printed with lot number and expiry date.

### Code K547 / Pack Size 100

#### Flocked Swab

Sterilin flocked swab in peel pouch with plastic shaft. Each tamper evident label is clearly printed with lot number and expiry date.

### Code K650 / Pack Size 100

#### Cotton Tip Swab

Sterile Dryswab with wood shaft in individual labelled transport tube. Each tamper evident label is clearly printed with lot number and expiry date.

### Code K3911 / Pack Size 100

#### DNA Buccal swab

Sterile buccal Swab is designed for collection of buccal cell samples for DNA testing. The single use swab has a unique removable collection pad to assist in processing the sample.

### Code K1256 / Pack Size 100

#### Double ended swab

Sterile Dryswab in individual labelled transport tube. Each tamper evident label is clearly printed with lot number and expiry date. The other end of the tube containing the swab is left open to allow the swab to air dry.

### Code K1374 / Pack Size 100

#### Fine Tip Swab

Sterile fine tip Dryswab with narrow plastic shaft in individual labelled transport tube. Each tamper evident label is clearly printed with lot number and expiry date.

### Code K660 / Pack Size 100

#### Cotton Taper Tip Swab

Sterile forensic blood Dryswab in individual labelled transport tube. Each tamper evident label is clearly printed with lot number and expiry date.

### Code K655 / Pack Size 100

#### 3" Forensic Woodstick Mini-Swab

These short cotton tip swabs have been designed so that the investigating officer can get a good wetted sample from previously dried blood, semen or other evidence.

# Forensic Laboratory Processing: Sterile Lab Essentials

All of our lab essentials are supported with the necessary industry standard certification and validation reports.



## Forensic DNA Grade Water

- Plastic ampoules for safety
- Easy to use
- Wetting agent for DNA collection

Used in conjunction with our swabs, our forensic DNA grade water is an excellent wetting agent for biological evidence recovery.

**Code K431 - 5ml / Pack Size 20**

**Code K430 - 10ml / Pack Size 20**

**Code K440 - 500ml / Pack Size 1**



## Eppendorf Tubes / Pipettes Scissors / Forceps

**PCR Tubes** – Manufactured to the highest standards providing efficient and homogenous heat transfer.

**Pipettes** – Range of size options available

**Scissors** – Sterile / Forensic DNA Grade material fit for purpose

**Forceps** - Sterile / Forensic DNA Grade material fit for purpose

**Code K758 / Pack Size 1000**

**Code K1336 / Pack Size 1000**

**Code K995 / Pack Size 1000**

**Code K996 / Pack Size 1000**



## Scalpels & Blades

- Quality manufactured
- Variety of blades available
- Forensic DNA Grade option

Our scalpels are a quality made product with a history of service to the forensic market. Speak to one of our sales team to discuss the range of options available.

**Code K1113 / Pack Size 10**

**Code K1123 / Pack Size 10**

**Code K731 / Pack Size 1**

**Code K732 / Pack Size 1**

# Forensic Laboratory Processing: Presumptive Blood Testing

The products listed here are traditional methods of lifting fingerprints and have stood the test of time. Still functional and widely used we continue to champion these tried and tested products.



## Blood Presumptive Stick

- Dip stick test
- Instant results
- Field or lab use

The blood presumptive strip test is a preliminary test to identify if the presence of blood is apparent before further analysis is carried out. Simple dip stick test with immediate results.

Code K162 / Pack Size 50



## Kastle Meyer Presumptive Blood Testing Kit

- Simple 2 step process
- Kit form includes all items
- Instant result

A simple, two-part presumptive chemical test to determine whether a suspect stain may be blood in origin. An instant result is obtained giving guidance as to whether evidence collection may be worthwhile.

Code K160 / Pack Size 1



## Kastle Meyer Presumptive Blood Testing Kit

- Simple 3 step process
- Kit form includes all items
- Instant result

Three-part presumptive chemical test to determine if a suspect stain may be blood. This kit also includes filter papers and a sample blood stain to enable checking of the reagent prior to use. An instant result is obtained giving guidance as to whether evidence collection may be worthwhile.

Code K161 / Pack Size 1



# Forensic Laboratory Processing: High Level Disinfectant

Cleaning plays a significant part in maintaining standards of a high level forensic practice and it is paramount to be using the product which meets both environmental and user regulations. Our SceneSafe range of high level disinfectant products have been produced to cater for a forensic environment. Please contact us for further supporting documents and correct use and application advice.



**SceneSafe HLD4 Spray**

- Denatures DNA/RNA
- 750ml bottle
- Safety, Security and Simplicity have been enhanced

Our multi-purpose high level disinfectant spray deploys leading edge biosecurity technologies and represents significant developments in disinfectant technology. HLD4H combines a formidable array of microbiological credentials with the enhanced facilities of faster and more effective anti-pathogenic activity.

Code K3849 / Pack Size 750ml



**SceneSafe HLD4 Solution**

- 5 Litre base chemical for dilution
- Bio-hazard contamination 1:20 dilution
- General contamination floors/walls 1:100 dilution

Our HLD4 formula has been developed under the strictest health and safety, occupational health and environmental risk assessments, the HLD4 requires minimal consideration for use. Available as medical, laboratory or environmental grade product.

Code K3845 / Pack Size 5 Litre



**SceneSafe HLD4 Concentrate**

- Dilute for specific application use
- Dilution guidelines provided
- Denatures DNA/RNA

Our concentrate solution is ideal for a lab based environment where the contamination changes frequently. Using SceneSafe HLD4 concentrate allows you to self-dilute to the level of standard you need. It saves wastage and targets specific contaminants.

Code K3838 / Pack Size 1 Litre

# Forensic Laboratory Processing: High Level Disinfectant



SceneSafe AirGene

- Rapid Decontamination
- Access all surfaces
- Effective against bacteria, fungi & viruses

AIRGENE is an aerosol product for professional use. It is designed for the rapid decontamination of inaccessible surfaces and to reduce cross infection in high risk environments. The exclusive design of AIRGENE, with its total-discharge valve, allows for the dispersing of contents in a single application, achieving a double effect: massive decontamination of microorganisms and the quick and effective elimination of unpleasant odours.

Code K1389 / Pack Size 20



SceneSafe HLD4 Wipes

- Alcohol free wipes
- Multi-active disinfectant solution
- Convenient, quick and effective

These wipes are designed for use on high risk areas and on most surfaces, including glass, metal, ceramics, plastics and rubber. The tub can be stored in the area of use for easy access to quickly disinfect surfaces at risk of contamination.

Code K3839 / Pack Size 100  
Code K3840 / Pack Size 200



SceneSafe Hand Disinfectant

- Alcohol gel for hygienic use
- 50ml or 500ml bottle
- Effective against known disease

An alcohol gel to be used on skin to immediately disinfect. Useful to keep on person or in a vehicle to maintain hygiene and a clean environment when working across multiple crime scenes.

We also offer a non-alcohol option for hand sanitisation.

Code K3827-50 - Size 50ml / Pack Size 15  
Code K3827-500 - Size 500ml / Pack Size 15

# Build Your Own Kit

SceneSafe have developed a modular crime scene range to allow the customer total control over what they receive in their kit.

This system is easy to use and provides a tailored service for our customers.



**SEARCH THE MODULES AVAILABLE**



**CHOOSE THE MODULES YOU REQUIRE**



**EMAIL YOUR REQUEST TO THE SALES TEAM**



**YOUR PRODUCT WILL BE MADE AND DELIVERED**

It's as simple as that.

All our Modules are placed in suitable sized rugged tough case and it's easy to access each module when at a crime scene. We can also offer a field backpack case and provide each individual module in an alternative soft case.

Every module can be purchased individually or as part of kit and custom options are available to better define exactly what you need.

Speak to a member of sales team who can assist in developing the kit you need.

## Build Your Own Kit: Major Crime Scene



### A Crime Scene Examiner Magnetic Powdering Kit

- Used once on major crime scenes
- 15ml compact pots
- Forensic DNA grade product

Lightweight portable magnetic fingerprint kit designed as a use once Forensic DNA Grade major crime scene product. This kit is DNA denatured and comes sealed ready for deployment to any major crime scene where a clean product is needed.

#### Contents

1 x Black magnetic powder  
 1 x Silver magnetic powder  
 1 x Yellow Fluorescent magnetic powder  
 1 x Green Fluorescent magnetic powder  
 1 x Red fluorescent magnetic powder  
 1 x Aluminium magnetic wand  
 Case dimensions 220mm x 160mm x 40mm

**Code K2500 / Pack Size 1**



### B Crime Scene Examiner Standard Powdering Kit

- Used once on major crime scenes
- 15ml compact pots
- Forensic DNA grade product

Lightweight portable latent fingerprint kit designed as a use once Forensic DNA Grade major crime scene product. This kit is DNA denatured and comes sealed ready for deployment to any major crime scene where a clean product is needed.

#### Contents

1 x Black powder  
 1 x Yellow Fluorescent powder  
 1 x Green Fluorescent powder  
 1 x Red fluorescent powder  
 1 x White powder  
 2 x Squirrel brushes  
 Case dimensions 260mm x 190mm x 60mm

**Code K2501 / Pack Size 1**



# Build Your Own Kit: Fingerprint Development



## C Bi-Chromatic Powder Kit

### Kit Contents:

1 x Scenesafe Bi-Chromatic Silver/Black Powder  
1 x Scenesafe Bi-Chromatic Silver/Red Powder  
2 x Original Zephyr Brush  
4 x Glove & Mask Module  
1 x Arrow set (25 x green 25 x black 25 x red, 24 adhesive right angled labels, 25 x fingerprints do not touch)

### Case Dimensions

### Option A - Scenesafe Lifter

1 x Scenesafe Lifters 5cm x 6cm black (25 sheets)  
1 x Scenesafe Lifters 5cm x 6cm white (25 sheets)  
1 x Scenesafe Lifters 5cm x 6cm clear (25 sheets)  
1 x Scenesafe Lifters 10cm x 11.5cm black (25 sheets)  
1 x Scenesafe Lifters 10cm x 11.5cm white (25 sheets)  
1 x Scenesafe Lifters 10cm x 11.5cm clear (25 sheets)  
1 x Lumo colour pen black x 1

Case Dimensions: 280mm x 135mm x 100mm

**Code K2502 / Pack Size 1**

### Option B - Gel Lifter

1 x Scene Gel Lifters 9cm x 13cm White (10 sheets)  
1 x Scene Gel Lifters 9cm x 13cm Black (10 Sheets)  
1 x Scene Gel Lifters 9cm x 13cm Clear (10 Sheets)  
1 x 75mm Roller  
1 x Lumocolor Pen Black

### Option C - Cobex Lifter

1 x Lifting Tape 50mm x 20m  
1 x Backing Sheet Clear 4" x 6" (100 Sheets)  
1 x 75mm Roller  
1 x Lumo Colour Pen  
1 x Template



## D Black & White Powder Kit

### Kit Contents:

1 x SceneSafe Black  
1 x SceneSafe White  
2 x Original Zephyr Brush  
4 x Glove & Mask Module  
1 x Arrow set (25 x green 25 x black 25 x red, 24 adhesive right angled labels, 25 x fingerprints do not touch)

### Option A - Scenesafe Lifter

1 x Scenesafe Lifters 5cm x 6cm black (25 sheets)  
1 x Scenesafe Lifters 5cm x 6cm white (25 sheets)  
1 x Scenesafe Lifters 5cm x 6cm clear (25 sheets)  
1 x Scenesafe Lifters 10cm x 11.5cm black (25 sheets)  
1 x Scenesafe Lifters 10cm x 11.5cm white (25 sheets)  
1 x Scenesafe Lifters 10cm x 11.5cm clear (25 sheets)  
1 x Lumo colour pen black x 1

Case Dimensions: 280mm x 135mm x 100mm

**Code K2503 / Pack Size 1**

### Option B - Gel Lifter

1 x Scene Gel Lifters 9cm x 13cm White (10 sheets)  
1 x Scene Gel Lifters 9cm x 13cm Black (10 Sheets)  
1 x Scene Gel Lifters 9cm x 13cm Clear (10 Sheets)

### Option C - Cobex Lifter

1 x Lifting Tape 50mm x 20m  
1 x Backing Sheet Clear 4" x 6" (100 Sheets)  
1 x 75mm Roller  
1 x Lumo Colour Pen  
1 x Template

# Build Your Own Kit: Fingerprint Development



## E Magnetic Powder Kit

**Kit Contents:**

- 1 x Scenesafe Black Magnetic Powder
- 1 x Scenesafe White Magnetic Powder
- 1 x Magnetic Wand
- 5 x Glove & Mask Module
- 1 x Arrow set (25 x green 25 x black 25 x red, 24 adhesive right angled labels, 25 x fingerprints do not touch)

**Option A - Scenesafe Lifter**

- 1 x Scenesafe Lifters 5cm x 6cm black (25 sheets)
- 1 x Scenesafe Lifters 5cm x 6cm white (25 sheets)
- 1 x Scenesafe Lifters 5cm x 6cm clear (25 sheets)
- 1 x Scenesafe Lifters 10cm x 11.5cm black (25 sheets)
- 1 x Scenesafe Lifters 10cm x 11.5cm white (25 sheets)
- 1 x Scenesafe Lifters 10cm x 11.5cm clear (25 sheets)
- 1 x Lumo colour pen black x 1

**Option B - Gel Lifter**

- 1 x Scene Gel Lifters 9cm x 13cm White (10 sheets)
- 1 x Scene Gel Lifters 9cm x 13cm Black (10 Sheets)
- 1 x Scene Gel Lifters 9cm x 13cm Clear (10 Sheets)
- 1 x 75mm Roller
- 1 x Lumocolor Pen Black

**Option C - Cobex Lifter**

- 1 x Lifting Tape 50mm x 20m
- 1 x Backing Sheet Clear 4" x 6" (100 Sheets)
- 1 x 75mm Roller
- 1 x Lumo Colour Pen
- 1 x Template

Case Dimensions: 280mm x 135mm x 100mm

Code K2504 / Pack Size 1



## F Fluorescent Latent Powder Kit

**Kit Contents:**

- 1 x Scenesafe Fluorescent Red Powder
- 1 x Scenesafe Fluorescent Green Powder
- 1 x Scenesafe Fluorescent Yellow Powder
- 3 x Zephyr Brush
- 4 x Glove & Mask Module
- 1 x Arrow set (25 x green 25 x black 25 x red, 24 adhesive right angled labels, 25 x fingerprints do not touch)

**Option A - Scenesafe Lifter**

- 1 x Scenesafe Lifters 5cm x 6cm black (25 sheets)
- 1 x Scenesafe Lifters 5cm x 6cm white (25 sheets)
- 1 x Scenesafe Lifters 5cm x 6cm clear (25 sheets)
- 1 x Scenesafe Lifters 10cm x 11.5cm black (25 sheets)
- 1 x Scenesafe Lifters 10cm x 11.5cm white (25 sheets)
- 1 x Scenesafe Lifters 10cm x 11.5cm clear (25 sheets)
- 1 x Lumo colour pen black x 1

**Option B - Gel Lifter**

- 1 x Scene Gel Lifters 9cm x 13cm White (10 sheets)
- 1 x Scene Gel Lifters 9cm x 13cm Black (10 Sheets)
- 1 x Scene Gel Lifters 9cm x 13cm Clear (10 Sheets)
- 1 x 75mm Roller
- 1 x Lumocolor Pen Black

**Option C - Cobex Lifter**

- 1 x Lifting Tape 50mm x 20m
- 1 x Backing Sheet Clear 4" x 6" (100 Sheets)
- 1 x 75mm Roller
- 1 x Lumo Colour Pen
- 1 x Template

Case Dimensions: 280mm x 135mm x 100mm

Code K2505 / Pack Size 1

# Build Your Own Kit: Fingerprint Development



## G Fluorescent Magnetic Powder Kit

### Kit Contents:

- 1 x Scenesafe Fluorescent Red Magnetic Powder
- 1 x Scenesafe Fluorescent Green Magnetic Powder
- 1 x Scenesafe Fluorescent Yellow Magnetic Powder
- 1 x Magnetic Wand
- 4 x Glove & Mask Module
- 1 x Arrow set (25 x green 25 x black 25 x red, 24 adhesive right angled labels, 25 x fingerprints do not touch)

### Option A - Scenesafe Lifter

- 1 x Scenesafe Lifters 5cm x 6cm black (25 sheets)
- 1 x Scenesafe Lifters 5cm x 6cm white (25 sheets)
- 1 x Scenesafe Lifters 5cm x 6cm clear (25 sheets)
- 1 x Scenesafe Lifters 10cm x 11.5cm black (25 sheets)
- 1 x Scenesafe Lifters 10cm x 11.5cm white (25 sheets)
- 1 x Scenesafe Lifters 10cm x 11.5cm clear (25 sheets)
- 1 x Lumo colour pen black x 1

### Option B - Gel Lifter

- 1 x Scene Gel Lifters 9cm x 13cm White (10 sheets)
- 1 x Scene Gel Lifters 9cm x 13cm Black (10 Sheets)
- 1 x Scene Gel Lifters 9cm x 13cm Clear (10 Sheets)
- 1 x 75mm Roller
- 1 x Lumocolor Pen Black

### Option C - Cobex Lifter

- 1 x Lifting Tape 50mm x 20m
- 1 x Backing Sheet Clear 4" x 6" (100 Sheets)
- 1 x 75mm Roller
- 1 x Lumo Colour Pen
- 1 x Template

Case Dimensions: 280mm x 135mm x 100mm

Code K2506 / Pack Size 1



## H Specialist Powder Kit

### Kit Contents:

- 1 x Scenesafe Fluorescent Red Powder
- 1 x Scenesafe Fluorescent Green Powder
- 1 x Scenesafe Fluorescent Yellow Powder
- 3 x Zephyr Brush
- 5 x Glove & Mask Module
- 1 x Arrow set (25 x green 25 x black 25 x red, 24 adhesive right angled labels, 25 x fingerprints do not touch)

### Option A - Scenesafe Lifter

- 1 x Scenesafe Lifters 5cm x 6cm black (25 sheets)
- 1 x Scenesafe Lifters 5cm x 6cm white (25 sheets)
- 1 x Scenesafe Lifters 5cm x 6cm clear (25 sheets)
- 1 x Scenesafe Lifters 10cm x 11.5cm black (25 sheets)
- 1 x Scenesafe Lifters 10cm x 11.5cm white (25 sheets)
- 1 x Scenesafe Lifters 10cm x 11.5cm clear (25 sheets)
- 1 x Lumo colour pen black x 1

### Option B - Gel Lifter

- 1 x Scene Gel Lifters 9cm x 13cm White (10 sheets)
- 1 x Scene Gel Lifters 9cm x 13cm Black (10 Sheets)
- 1 x Scene Gel Lifters 9cm x 13cm Clear (10 Sheets)
- 1 x 75mm Roller
- 1 x Lumocolor Pen Black

### Option C - Cobex Lifter

- 1 x Lifting Tape 50mm x 20m
- 1 x Backing Sheet Clear 4" x 6" (100 Sheets)
- 1 x 75mm Roller
- 1 x Lumo Colour Pen
- 1 x Template

Case Dimensions: 280mm x 135mm x 100mm

Code K2507 / Pack Size 1

All modules can be offered in a suitable sized rugged hard case or a field back pack – speak to our sales team

# Build Your Own Kit: Light Source / PPE



## I Forensic Light Kit

- 4 Modes of light output Red / Green / Blue & White
- Robust & strong
- 440 lumens / 190m beam distance / Battery life 400 hrs

Produces excellent results with SceneSafe Fluorescents powders without the high costs of expensive light sources. For photography and visual examination this torch is such a great tool for any CSI. The torch also has a wide field white light which has 3 settings and is great as a flat light for identifying fingerprints.

### Kit Contents:

- 1 x Torch (Batteries Included)
  - 1 x Red Goggles
  - 1 x Orange Goggles
  - 1 x Yellow Goggles
  - 1 x Charger
  - 1 x Vehicle charger adapter
- Case Dimensions: 280mm x 135mm x 100mm

**Code K2508 / Pack Size 1**



## J Personal Protective Clothing (PPE) Kit

- Compact & lightweight
- Soft mesh carry bag with handle
- Individually sealed components

Our PPE kit module has all the necessary components needed at a crime scene to protect both the user and the scene. DNA denatured this kit provides the reassurance that each component will be ready to enter a crime scene without the risk of contamination. This development is now becoming a mandatory requirement in the field of forensics.

### Kit Contents:

- 5 x SceneSafe Suit
  - 5 x Mask
  - 5 x Overshoe
  - 10 (Pairs) x Gloves
  - 5 x Hair Caps x 5
  - 5 x Over Sleeves x 5
- Case Dimensions: 445mm x 325mm x 80mm

**Code K2509 / Pack Size 1**



# Build Your Own Kit: Specialist Fingerprint Development



## K Suspension Lift Kit with Gel Lifter

- Excellent on wet areas
- Used in collaboration with Gel Lifters
- Fluoresces using Module I – light kit

A widely versatile and effective technique for powdering wet areas where conventional methods would not work. This kit comes with the full range of suspensions and is ready to use.

### Kit Contents:

Powder Suspension Black x 1	100mm Roller x 1
Powder Suspension Red x 1	Adhesive Right Angled Scale x 1
Powder Suspension Green x 1	Glove & Mask Module x 1
Powder Suspension Yellow x 1	Case Dimensions: 380mm x 160mm x 165mm
Water Spray Bottle (empty) 500ml x 1	
Scene Gel Lifters 9cm x 13cm White (10 Sheets per pack) x 1	
Scene Gel Lifters 9cm x 13cm Black (10 Sheets per pack) x 1	
Scene Gel Lifters 13cm x 18cm White (10 Sheets per pack) x 1	
Scene Gel Lifters 13cm x 18cm Black (10 Sheets per pack) x 1	

**Code K2510 / Pack Size 1**



## L Wet Powder Kit

- Used on adhesives tapes / sticky surfaces
- Yields excellent results
- Easy to use

Wet powder is a product used to develop fingerprints on surfaces where traditional dry powders cannot produce any result. Its effective and simple to use.

### Kit Contents:

Wet Powder Black x 1  
Wet Powder White x 1  
Glove & Mask Module x 1  
Water Spray Bottle (empty) 500ml x 1  
Case Dimensions: 280mm x 135mm x 130mm

**Code K2511 / Pack Size 1**

# Build Your Own Kit: Evidence Collection



## M Evidence Packaging Module 1 - Bags

### Kit Contents:

5 x Evidence Bags Small	2 x Nylon Bags Small
5 x Evidence Bags Medium	2 x Nylon Bag Medium
5 x Evidence Bags Large	2 x Nylon Bags Large
2 x Breathable Bags Small	10 x Taslismen Seal yellow
2 x Breathable Bags Medium	1 x Buff Packaging Tape 50mm x 66m
2 x Breathable Bags Large	10 x Tamper Evident Seal 20mm x 70mm
5 x Paper Sack CJAct Small	20 x Tamper Evident Seal 45mm x 150mm
5 x Paper Sack CJAct Medium	
5 x Paper Sack CJAct Large	

Case Dimensions: 445mm x 325mm x 80mm

Code K2512 / Pack Size 1



## N Evidence Packaging Module 2 - Boxes

### Kit Contents:

1 x Mobile Phone Box	3 x Plastic Forensic Securitainer 52ml
1 x Faraday Bag for Mobile Phone	3 x Plastic Forensic Securitainer 120ml
1 x Faraday Bag for Laptop	1 x Plastic Forensic Securitainer 250ml
1 x Forensic Box Small	1 x Plastic Forensic Container Small
18 x Tamper Evident Seal 20mm x 70mm	1 x Plastic Forensic Container Medium
6 x Tamper Evident Seal 45mm x 150mm	1 x Plastic Forensic Container Large
1 x Forensic Box Medium	
1 x Forensic Box Large	
1 x Black Lumo Colour Pen	
1 x Weapons Tube Small	
1 x Weapons Tube Medium	

Case Dimensions: 445mm x 325mm x 80mm

Code K2513 / Pack Size 1



# Build Your Own Kit: DNA Recovery / Fingerprint Recovery



## Q DNA Collection

### Kit Contents:

25 x Swabs	1 x Biro Pen Black
20 x DNA Bags	1 x Marking Chalk
20 x Sterile Water	1 x Pencil with Rubber
1 x Mini Tapes (pack of 25)	1 x Pencil Sharpener
10 x Gloves (Pair)	
2 x Forceps	
25 x DNA Labels	
10 x FTA Card	
25 x Bio Label	
1 x Lumocolour Pen Black	
1 x K160 Blood Presumptive Test	
1 x Semen Test	

Case Dimensions: 380mm x 160mm x 165mm

Code K2516 / Pack Size 1



## R Fingerprint Taking Kit

### Kit Contents:

1 x Metal Cardholder  
1 x (100 Pack) Grimex Wipes  
100 x Fingerprint Cards

### Option A -

1 x Inkpad

### Option B -

3 x Fingerprint Ink  
1 x Inking Slab  
1 x 75mm Roller

Custom Outer Case

Code K2517 / Pack Size 1



# Index

## #

4 Sided Evidence Marker .....	Page 8
-------------------------------	--------

## A

ABFO Scales .....	Page 33
Adhesive Arrows .....	Page 33
Adhesive Scales .....	Page 33
Adult Body Bags .....	Page 45
Airgene .....	Page 53
Arson Bags .....	Page 46
Arson Collection Kit .....	Page 46

## B

Barrier Tape .....	Page 4
Barrier Tape Dispenser .....	Page 4
Black & White Powder Kit .....	Page 56
Black Out Tent .....	Page 9
Black Powder Kit .....	Page 22
Blood Presumptive Stick .....	Page 51
Blood Test Kit .....	Page 51
Body Bags .....	Page 45
Body Recovery Kit .....	Page 45
Body Tent .....	Page 9
Breathable Tamper Evident Bags .....	Page 37
Brushes .....	Page 23
Buccal Swabs .....	Page 49

## C

Card Strips .....	Page 29
Casting Frame .....	Page 32
Casting Powders .....	Page 32
Chemical Scenesuits .....	Page 11
Child Body Bags .....	Page 45
Chinagraph Pencil .....	Page 27
Clear Stock Bags .....	Page 38
Cobex Sheets .....	Page 27
Cobex Templates .....	Page 27
Cotton Gloves .....	Page 12
Coveralls .....	Page 11
Covert Marking Kit .....	Page 48

## D

Disposable Brush .....	Page 22
Disposable Evidence Markers .....	Page 7
Disposable Fingerprint Kits .....	Page 22
Disposable Grippers .....	Page 6
Disposable Powder .....	Page 22
DNA Collection .....	Page 63
Drinks Can Boxes .....	Page 40
Drugs Collection Bags .....	Page 37

## E

Ear Defenders .....	Page 10
Elimination Kit .....	Page 5

Eppendorf Tubes .....	Page 50
Etching Kit/Electro Etch Solutions .....	Page 48
Evidence Bags .....	Page 37
Evidence Collection Kit .....	Page 44
Evidence Marking Flags .....	Page 7
Evidence Packaging Module - 1 .....	Page 61
Evidence Packaging Module - 2 .....	Page 61
Exhibit Box .....	Page 40
Exhibit Label .....	Page 41
Eye Protection .....	Page 10

## F

Face Protection .....	Page 10
Faraday Bags .....	Page 27
Fasson Lifters .....	Page 26
Feather Brush .....	Page 24
Fibre Marking Kit .....	Page 48
Fibreglass Brush .....	Page 23
Financial Packaging Kit .....	Page 44
Fingerprint Cards .....	Page 29
Fingerprint Ink .....	Page 29
Fingerprint Lifting Tape .....	Page 26
Fingerprint Magnifier .....	Page 27
Fingerprint Powder .....	Page 16
Fingerprint Roller .....	Page 30
Fingerprint Spoon .....	Page 29
Fingerprint Taking Kit .....	Page 63
First on Scene Kit .....	Page 5
Flocked Swabs .....	Page 49
Fluorescent Latent Powder Kit .....	Page 57
Fluorescent Magnetic Powder .....	Page 19
Fluorescent Magnetic Powder Lift Kit .....	Page 58
Fluorescent Powder .....	Page 18
Fluorescent Scale .....	Page 34
Footwear/ Shoe Print Kit .....	Page 31
Forceps .....	Page 50
Forensic DNA Grade Water .....	Page 50
Forensic Scale .....	Page 33
Forensic Stepping Plate .....	Page 6

## G

Gel Lifters .....	Page 28
Glasses .....	Page 10
Gloves .....	Page 12
Goggles .....	Page 10

## H

Handgun Box .....	Page 40
Handgun Collection Kit .....	Page 42
Hard Cap .....	Page 10
Heavy Duty Gloves .....	Page 12
Helmet .....	Page 10
HLD4 Concentrate .....	Page 52
HLD4 Solution .....	Page 52
HLD4 Spray .....	Page 52
HLD4 Wipes .....	Page 53

## I

Impressions .....	Page 32
Infant Body Bags .....	Page 45
Ink Pad .....	Page 29
Ink Tube .....	Page 30
Inking Slab .....	Page 30
Inking Tool .....	Page 29
Inking Roller .....	Page 30

## K

Kastle Meyer Blood Presumptive Test .....	Page 51
Kevlar Gloves .....	Page 12

## L

Labels .....	Page 33
Labels & Marker Kit .....	Page 62
Latent Powder .....	Page 17
Latex Gloves .....	Page 12
Lifters .....	Page 25
Lifting Tape .....	Page 26
Light Kit .....	Page 59
Lint Free Cotton Gloves .....	Page 12
Liquid Accelerant Container .....	Page 46

## M

Magnetic Powder .....	Page 18
Magnetic Powder Lift Kit .....	Page 57
Magnetic Scales .....	Page 33
Magnifying Glass .....	Page 27
Marabou Brush .....	Page 24
Markers with Scale .....	Page 8
Marking Kit .....	Page 48
Masks .....	Page 10
Media Bags .....	Page 38
Metal Ended Weapons Tube .....	Page 43
Mob Caps .....	Page 10
Mobile Phone Box .....	Page 40

## N

Nitrile Gloves .....	Page 12
Nylon Bags .....	Page 46

## O

Opaque Stock Bags .....	Page 38
Overboots .....	Page 14
Overshoe .....	Page 14

## P

Palm Print Kit .....	Page 31
Paper Sacks .....	Page 39
Pens .....	Page 27
Photo Evidence Markers .....	Page 8
Photo Evidence Ruler .....	Page 33

# Index

Pipettes .....	Page 50
Plain Paper Sacks .....	Page 39
Police Evidence Sacks .....	Page 39
Powder .....	Page 16
Powder Clean .....	Page 20
PPE Kit .....	Page 59
Pre Inked Strips .....	Page 30
Preservation Covers .....	Page 7

## R

Recovery Packaging Kit .....	Page 44
Rifle Box .....	Page 40
Rifle Collection Kit .....	Page 42
Rulers .....	Page 33

## S

Scales Kit .....	Page 35
Scales .....	Page 33
Scalpels .....	Page 51
Scene Record Kit .....	Page 4
Scenecast .....	Page 32
SceneSafe Hand Disinfectant .....	Page 53
SceneSafe Ink Tool .....	Page 29
SceneSafe Lifters .....	Page 25
SceneSafe Tabs .....	Page 26
Scenesuits .....	Page 11
Scissors .....	Page 51
Sealing Tape .....	Page 43
Seals .....	Page 43
Shoe Impressions .....	Page 31
Skye Brush .....	Page 23
Solid Accelerant Container .....	Page 46
Specialist Powder Kit .....	Page 58
Speed Screen .....	Page 9
Speed Tent .....	Page 9
Squirrel Brush .....	Page 23
Stepping Multi-Pack .....	Page 6
Sterile Nitrile Gloves .....	Page 12
Sterile Water .....	Page 50
Suspension Lift Kit with Gel Lifter .....	Page 60
Suspension Powder .....	Page 21
Swabs .....	Page 49

## T

Tags .....	Page 26
Tack Mats .....	Page 5
Tamper Evident Seals .....	Page 43
Tamper Evident Bags .....	Page 37
Tape and Label Kit .....	Page 44
Tape Dispenser .....	Page 4
Templates .....	Page 27
Tent ID Markers .....	Page 8
Tents .....	Page 9
Ties .....	Page 43
Tools and Accessories .....	Page 62

Transparent Exhibit Box .....	Page 41
Tubes .....	Page 43
Tweezers .....	Page 50

## U

Unique Covert Marking Kit .....	Page 48
---------------------------------	---------

## V

Versacones .....	Page 8
------------------	--------

## W

Water .....	Page 50
Weapons Tube .....	Page 43
Wet Powder Kit .....	Page 60
Window Box .....	Page 40
Window Paper Sacks .....	Page 39

## Z

Zephyr Brush .....	Page 23
--------------------	---------



New updated version of the Scenes of Crime Handbook coming soon, contact [handbookupdates@scenesafe.co.uk](mailto:handbookupdates@scenesafe.co.uk) to order your copy now.

# Terms & Conditions

## **How to buy:**

Email: [sales@scenesafe.co.uk](mailto:sales@scenesafe.co.uk)

Telephone: +44 (0)1621 786654

Fax: +44 (0)1621 786655

SceneSafe have a network of distributors worldwide who can service your requirements, contact our sales team who can direct you to the nearest SceneSafe representative.

## **Shipping & Handling**

For details of delivery charges outside of mainland UK please contact us. Shipping rates will be based upon the weight and dimensions of the package. Therefore charges will vary dependant on the order quantities or service required and final delivery location. Our SceneSafe freight team distribute worldwide by air, land or sea, including hazardous goods for transport.

## **Hazardous Goods for Transport**

SceneSafe staff are IATA, IMDG & ADR certified to carry out a full Dangerous Goods documentation service to any destination specified within International shipping regulations. All hazardous products within the SceneSafe range will be identified at time of quotation.

## **Export Documentation**

As a value added service we provide full shipping documentation required for any specific country including Certificate of Origin, Commercial Invoices, Packing Lists and Certificate of Conformity.

## **Terms & Conditions**

For a copy of our full terms and conditions please go to our website where these can be found, alternatively contact our sales team who can provide a copy via email or fax.

Tel: +44 (0) 1621 786654  
Fax: +44 (0) 1621 786655  
Email: [Sales@scenesafe.co.uk](mailto:Sales@scenesafe.co.uk)

**[www.scenesafe.co.uk](http://www.scenesafe.co.uk)**

SceneSafe Ltd, registered in the UK (number 4028076), a part of the WA Group of Companies  
Registered office and Headquarters: Midas House 8 & 9 Burnham Business Park, Springfield Road, Burnham-on-Crouch, Essex, CM0 8TE, United Kingdom

Authorised Distributor

